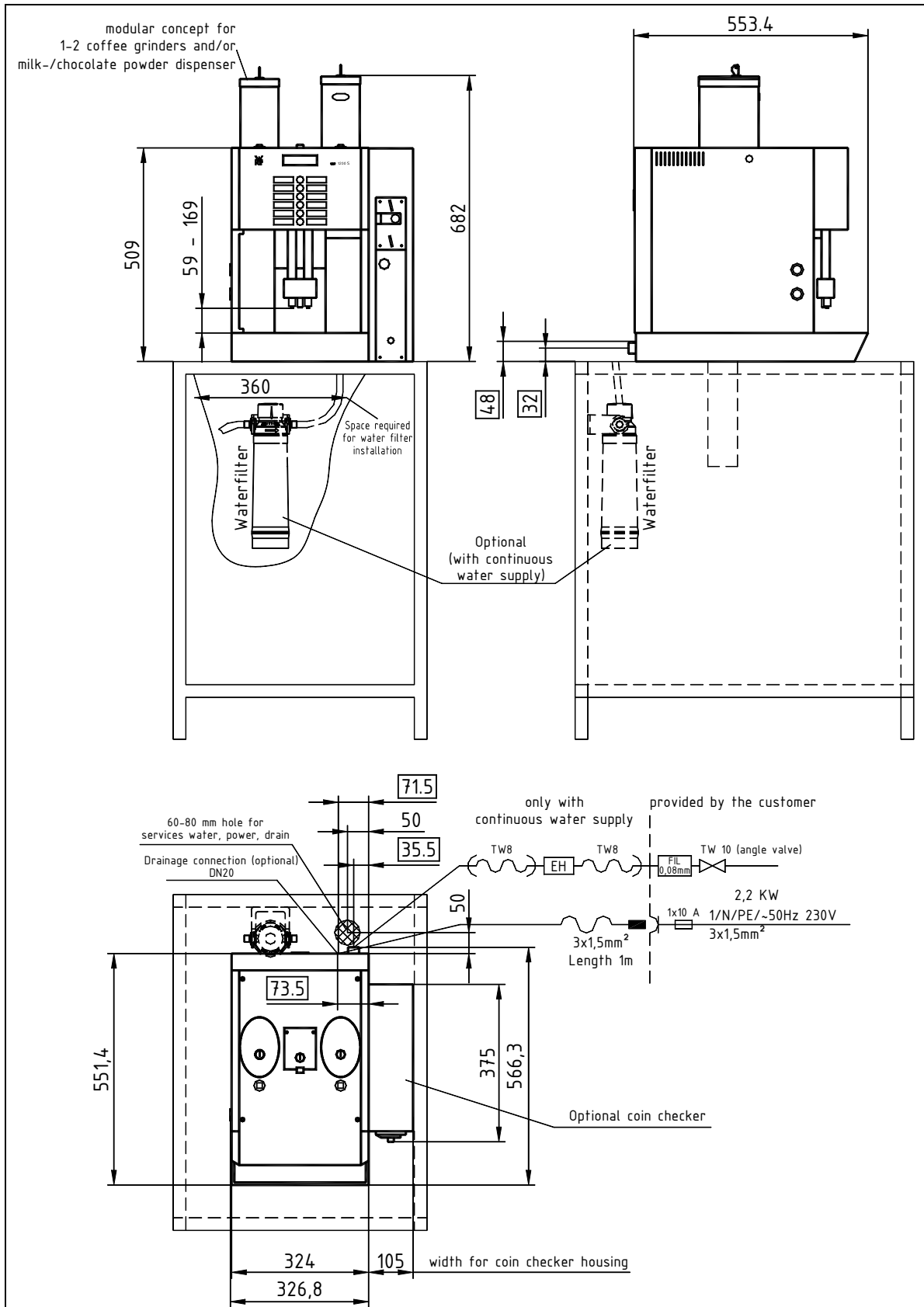


WMF Coffee Machines

WMF Planning Info

1200 S! series 1200



WMF Aktiengesellschaft Vertrieb Kaffeemaschinen
 D-73309 Geislingen/Steige Germany
 Phone 0 73 31 - 25 8768
 E-Mail: Gastronomie@wmf.de
 Best. Nr. 63.8462.0390

Telefax 0 73 31/25 81 69
 Internet: <http://www.wmf.de>

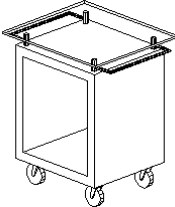
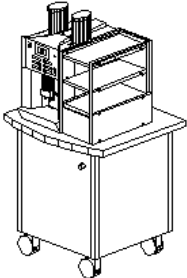
WMF Coffee Machines

Data Sheet for 1200 S! series 1200

<p>The article numbers in the table represent only a cross-section of the complete range of articles</p> <p>The WMF 1200 S! series is a modular system and can be customised for the requirements of the customer.</p>	03 1200 0100	1200 S 1 / N / PE, 50Hz, 230V, 2,2KW, fuse protection building 10 A, integrated milk foamer, water tank 4 L, 1 coffee grinder, hot water outlet, espresso, café crème, cappuccino, latte macchiato, dual coffee spout 58-173 mm, illumination
	03 1200 0047	1200 S 1 / N / PE, 50Hz, 230V, 2,2KW, fuse protection building 10 A, water tank 4 L, 1 coffee grinder, 1 milkpowder dispenser, hot water outlet, espresso, café crème, cappuccino, latte macchiato, dual coffee spout 58-173 mm, illumination
	03 1200 0042	1200 S 1 / N / PE, 50Hz, 230V, 2,2KW, fuse protection building 10 A, fixed water connection 3/8", drain DN 19, 1 coffee grinder, 1 milkpowder dispenser, hot water outlet, plug&clean, espresso, café crème, cappuccino, latte macchiato, dual coffee spout 58-173 mm, illumination
	03 1200 0680	1200 S 1 / N / PE, 50Hz, 230V, 2,2KW, fuse protection building 10 A, integrated milk foamer, fixed water connection 3/8", drain DN 19, 1 coffee grinder, hot water outlet, plug&clean, espresso, café crème, cappuccino, latte macchiato, dual coffee spout 58-173 mm
	03 1200 0410	1200 S 1 / N / PE, 50Hz, 230V, 2,2KW, fuse protection building 10 A, integrated milk foamer, fixed water connection 3/8", drain DN 19, 2 coffee grinder, hot water outlet, plug&clean, espresso, café crème, cappuccino, latte macchiato, dual coffee spout 58-173 mm, illumination
	03 1200 0200	1200 S 1 / N / PE, 50Hz, 230V, 2,2KW, 2,2KW, fuse protection building 10 A, integrated milk foamer, water tank 4 L, 2 coffee grinders, hot water outlet, espresso, café crème, cappuccino, latte macchiato, dual coffee spout 58-173 mm, illumination
	03 1200 0300	1200 S 1 / N / PE, 50Hz, 230V, 2.2 kW, fuse protection building 10 A, integrated milk foamer, water tank 4 L, 1 coffee grinder, 1 chocolate powder dispenser, hot water outlet, espresso, café crème, cappuccino, latte macchiato, chociatto, drinking chocolate, dual coffee spout 58-173 mm, illumination
	03 1200 0407	1200 S 1 / N / PE, 50Hz, 230V, 2.2 kW, fuse protection building 10 A, integrated milk foamer, fixed water connection 3/8", drain DN 19, 1 coffee grinder, 1 chocolate powder dispenser, hot water outlet, plug&clean, espresso, café crème, cappuccino, latte macchiato, chociatto, drinking chocolate, dual coffee spout 58-173 mm, illumination
	03 1200 MUEP	1200 S fitted with coin checker – housing 105 mm width, 1 / N / PE, 50Hz, 230V, 2,2KW, fuse protection building 10 A, fixed water connection 3/8", drain DN 19, 1 coffee grinder, 1 milk powder dispenser, hot water outlet, Espresso, Café Crème, Cappuccino, Latte Macchiato, dual coffee spout 58-173 mm, illumination

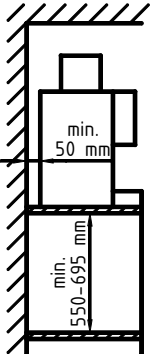
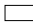
WMF Coffee Machines

Data Sheet 1200 S! series 1200

Brewing process:	speciality coffees and drinking chocolate with and without milk or milk powder topping Drinking chocolate made of chocolate powder, hot water and addition of milk.
Daily output:	100 cups, 10 L hot water total output per day
Option:  	<p>Mobile trolley for WMF 1200 S series, (dimensions W850xH970xD685 mm) with four castors, two with brake,</p> <p>03 9171 0001 Basic trolley, powder-coated steel frame, with safety glass plate and handle and edge protector</p> <p>03 9171 2001 Basic trolley with perforated plate panels, powder-coated steel frame, with safety glass plate and handle and edge protector</p> <p>03 917110001 Basic trolley with plastic panels and illumination, powder-coated steel frame, with safety glass plate and handle and edge protector, 1 / N / PE, 50Hz, 230V, including multiple socket for direct coffee machine connection,</p> <p>03 9171 9001 Hanging basket (optional) maximum 3 per trolley,</p> <p>Mobile coffee station 03 9491 0001, (dimensions W850xH900xD780 mm)</p> <p>Equipped with four castors, two with brake. Suitable only for one 1200 S with 4 L Watertank, (including sales device and 1 accessory unit).</p>
Option:	Locks for grinders and milk-/chocolate dispensers, steam outlet , tank filter 33 2332 5000 for WMF 1200 S with water tank. Only for 1200 S equipped with continuous water supply, water filter Bestmax S , (dimensions 88 Ø x 370 mm) for optimising water quality and reduction of calcification.
Accessories:	multitool, cleaning brush, basic equipment decalcifier, cleaning tablets, milk cleaner
Degree of protection:	IPX0
Protection class:	Protection class I
Perceptible heat emission:	0.05 kWh/h in standby mode
Perceptible heat emission:	2.045 kWh/h in maximum mode
Continuous sound pressure level (Lpa)	< 70 dB (A)
Water connection:	DN 10, (3/8") e.g. angle valve
Flow pressure:	with fixed water connection at least 0.2 MPa (2.0 bar), at 2 L min.
Miscellaneous:	coffee machine with dry residue discharge into an integrated drawer
Drain:	drip tray without drain. Optional drain DN 19, gradient at least 2%
Empty weight:	ca. 30-35 kg

WMF Coffee Machines

Data Sheet 1200 S! Series 1200

<p>Installation clearances:</p> 	<p>For the installation a minimum clearance of 50 mm to the back wall and at the sides to walls or other non-WMF equipment is required for functional, service and safety reasons.</p> <p>A clear height of about 1100 mm from the top of the installation area is required. The height of the installation area from the top of the floor should be at least 850 mm. Installation of accessories underneath the unit (such as water filter) requires sufficient space for the water filter (126 mm diameter and 490 mm height).</p> <p>If the connections of the machine are down through the counter, please also consider the space required by the connection lines, which may restrict the usable space in the substructure.</p>
<p>Electrical connection:</p>	<p>The following specifications for the electrical connection and the cited standards are applicable for connecting machines in EU countries. If applicable, additional national regulations must be observed. Outside the EU the acceptance of the cited standards must be checked by the persons who market the machines.</p> <p>The building electrical system must comply with IEC 364. For increased safety the device should be protected by an earth-leakage circuit breaker with 30 mA rated fault current (EN 61008). A standard electrical outlet compliant with EN 60309 must be installed near the device or 30 cm below the top of the counter at the back or side of the undercounter structure for a single-phase connection. If the power connection cord of this device has been damaged, it must be replaced by our customer service or by a similarly qualified person. If the machine is permanently connected to the building power supply, a circuit breaker that disconnected all poles (main switch) in accordance with EN 60947 must be installed with at least 3 mm contact separation must be installed to protect the machine; the disconnecting device is recommended for a flexible connection. The power cord must not be in contact with hot objects. The electrical outlet is part of the building installation. The machine must not be installed with a fixed building connection when used with a trolley (mobile station).</p> <p><u>Important information:</u></p> <p>To prevent any interference with our shielded data lines by equipotential currents between the devices, an additional equipotential bonding should be installed for devices connected to an accounting system. (See IEC 364)</p>
<p>Water feed and drainage:</p>	<p>A sufficiently large, easily accessible stop cock (preferably a ball valve) and a dirt filter with a 0.080 mm mesh must be installed in the water pipe under the counter.</p> <p>If there is a drainage connection, the drain must be installed at the rear panel of the bottom cupboard 50 cm from the top of the counter.</p> <p>A pipe syphon must be installed in the vented drainage pipe. (Fit hose connection in the funnel with a hose ring holder) The WMF-specific conditions for water, power and effluent must be observed at all times.</p> <p>For the connection from below through the counter an opening is required in accordance with the drawing (see elevation drawing) or a hole approx. 80 to 120 mm in diameter. Alternatively the connections for electricity, water and drainage can be taken through the body of the machine from the back in the indicated  area (see the elevation and side view).</p> <p>If the water contains more than 5 ppm carbonate, a WMF water filter must be installed.</p> <p>CAUTION: The static water pressure must not exceed 0.6 MPa (6 bar).</p>