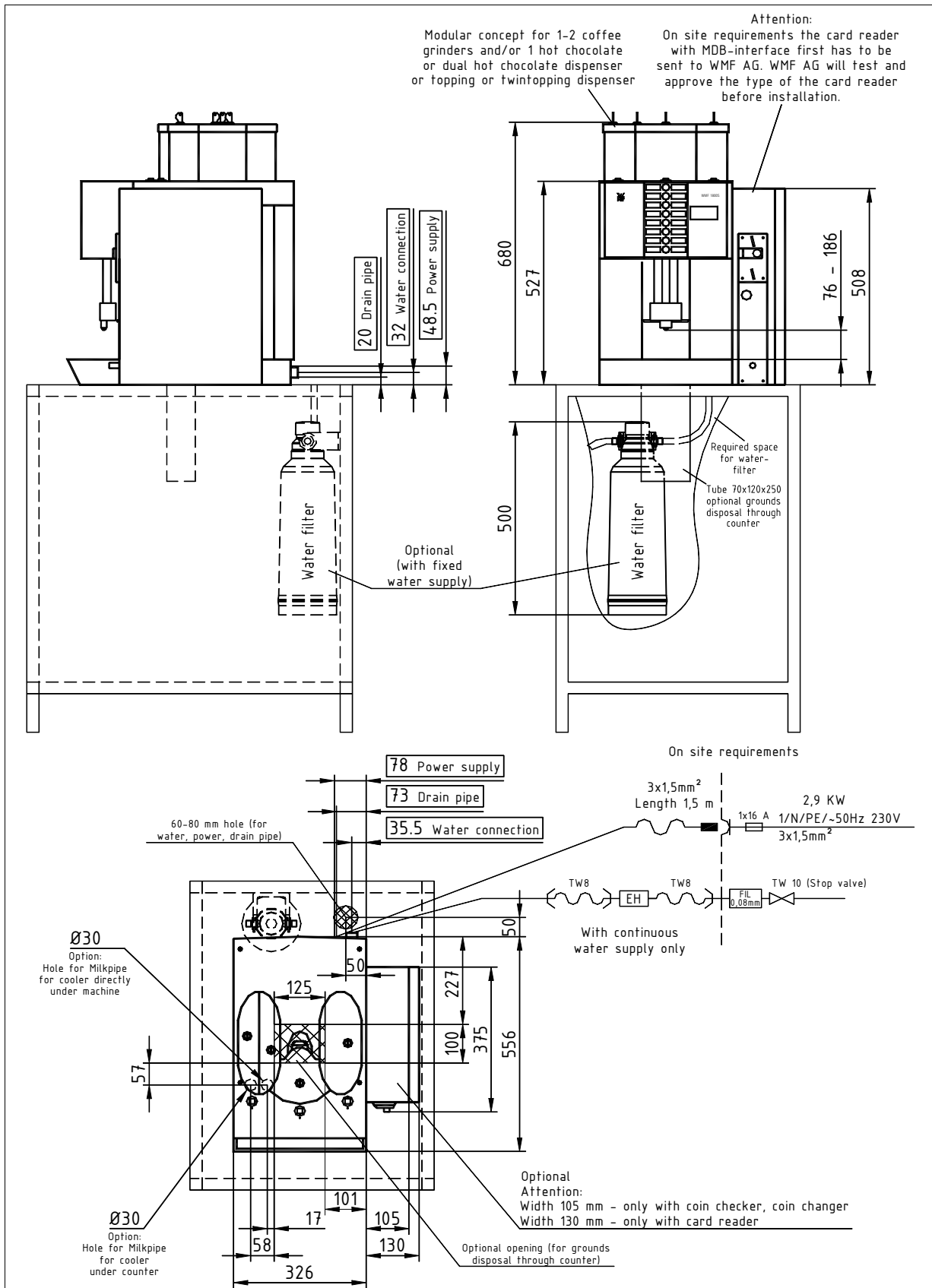


WMF COFFEE MACHINES

WMF Planning Information

Data Sheet 1800 S Series 1800 with coin checker / coin changer / card reader



WMF AG (Coffee Machine Department)

D-73309 Geislingen/Steige Germany

Tel: + 49 73 31 - 25 87 68

Email: Gastronomie@wmf.de

Order No. 63.8438.0390

Fax + 49 73 31/25 81 69

Web: <http://www.wmf.de>

WMF COFFEE MACHINES

Data Sheet 1800 S Series 1800 with coin checker / coin changer / card reader

<p>The article numbers in the table represent only a cross-section of the complete range of articles</p>	<p>03 1800 MUEP 1800 S 1 / N / PE, 50Hz, 230V, 2,9KW, COIN CHECKER, integrated milk foamer, hot water outlet, 1 lockable coffee grinder, manual coffee insert, 1 lockable hot chocolate dispenser, fixed water connection 3/8" drain pipe DN19mm, Espresso, Café Crème, Cappuccino, Latte Macchiato, hot chocolate, dual coffee spout 76 – 186 mm. 1 x 16 A (CEE form) fuse required (not included),</p>
<p>The WMF 1800 S series is a modular system and can be customised to customer requirements</p>	<p>03 1800 GEKL 1800 S 1 / N / PE, 50Hz, 230V, 2,9KW, CARD READER- width 130mm, integrated milk foamer, hot water outlet, 2 lockable coffee grinders, manual coffee insert, 1 lockable hot chocolate dispenser, fixed water connection 3/8" drain pipe DN19mm, Espresso, Café Crème, Cappuccino, Latte Macchiato, hot chocolate, dual coffee spout 76 – 186 mm. 1 x 16 A (CEE form) fuse required (not included).</p>
	<p>03 1800 KALE 1800 S 1 / N / PE, 50Hz, 230V, 2,9KW, CARD READER with MDB standard – width 130mm, integrated milk foamer, hot water outlet, 1 lockable coffee grinder, manual coffee insert, 1 lockable hot chocolate dispenser, fixed water connection 3/8" drain pipe DN19mm, Espresso, Café Crème, Cappuccino, Latte Macchiato, hot chocolate, dual coffee spout 76 – 186 mm. 1 x 16 A (CEE form) fuse required (not included).</p>
	<p>03 1800 MUEW 1800 S 1 / N / PE, 50Hz, 230V, 2,9KW, COIN CHANGER, integrated milk foamer, hot water outlet, 1 lockable coffee grinder, manual coffee insert, 1 lockable hot chocolate dispenser, fixed water connection 3/8" drain pipe DN19mm, Espresso, Café Crème, Cappuccino, Latte Macchiato, hot chocolate, dual coffee spout 76 – 186 mm. 1 x 16 A (CEE form) fuse required (not included).</p>
	<p>Only card readers with an MDB interface can be installed in the attached housing. Information on alternative makes and types is available upon request. Please provide exact specification of the planned card reader.</p>

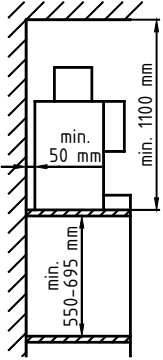
WMF COFFEE MACHINES

Data sheet 1800 S series 1800 with coin checker / coin changer / card reader

Brewing process:	Specialty coffees and hot chocolate with and without milk or milk powder topping. Hot chocolate made from chocolate powder, hot water and milk.
Daily output :	Max. 180 cups of specialty coffees with and without added milk or milk foam, total output per day 24 L hot water
Option:	Lockable bean container 1 kg left & right, 0,5 kg in the middle, steam tap, LED-lighting in various colours, water filter (dimensions 145 mm Ø x 500 mm height), drainage connection DN 19 .
Accessories:	Multitool, cleaning brush, 2 bottles of descaler, 100 detergent tablets, 1l milk system cleaner
Type of protection:	IP20
Protection class:	Class I
Perceptible heat emission:	0.14 kWh/h in standby mode for all types with rated power 2.9 kW
Perceptible heat emission:	2.93 kWh/h in maximum mode for all types with rated power 2.9 kW
Continuous sound pressure level (Lpa)	< 70 dB (A)
Water connection:	3/8", TW10, with service valve or angle valve
Dynamic Pressure:	minimum 0,2 MPa (2,0 bar), at 2 L/min.,
Miscellaneous:	coffee machine with dry grounds disposal into an integrated grounds container or optional with grounds disposal into a customer provided container
Drain:	Drain DN 19, Gradient at least 2%
Empty weight:	approx. 33-43 kg

WMF COFFEE MACHINES

Data Sheet 1800 S Series 1800 with coin checker / coin changer / card reader

<p>Installation clearance:</p> 	<p>For the installation a minimum clearance of 50 mm to the back wall and to the side walls or other non-WMF equipment is required for the machine to function, for service and safety reasons.</p> <p>A clear height of about 1100 mm from the top of the installation area is required. The height of the installation area from the floor should be at least 850 mm. Installation of accessories underneath the unit requires sufficient space, i.e. for the water softener (145 mm diameter and 500 mm height).</p> <p>If the connections of the machine are through the counter, consider the space required by the connection lines, which may restrict the usable space in the substructure.</p>
<p>Electrical connection:</p>	<p>The following specifications for the electrical connection and the cited standards are applicable for connecting machines in EU countries. If applicable, additional national regulations must be observed. Outside the EU the acceptance of the cited standards must be checked by those marketing the machines.</p> <p>The building electrical system must comply with IEC 364. For increased safety the device must be connected to a residual current circuit breaker (RSSB) with 30 mA rated fault current (EN 61008). A standard three-phase electrical socket (CEE form) must be installed near the device or 30 cm below the top of the counter, at the back or on the side of the counter. If the power connection cord of this device has been damaged, it must be replaced by our customer service or by a similarly qualified person. The power cord must not be in contact with hot objects. The electrical socket is not included; it is part of the provided building installation.</p> <p><u>Please note:</u></p> <p>For some Card Reader you need a separately power supply. Please ask your supplier for correct installation information.</p> <p><u>Please note:</u></p> <p>To prevent any interference with our shielded data lines by equipotential currents between the devices, an additional equipotential bonding should be installed for devices connected to an accounting system. (See IEC 364)</p>
<p>Water feed and drainage:</p>	<p>A sufficiently large, easily accessible stop valve (preferably a ball valve) and a dirt trap with a 0.080 mm mesh must be installed in the water pipe underneath the counter.</p> <p>The drain must be installed at the rear panel of the bottom cupboard approx. 50 cm from the top of the counter.</p> <p>A pipe trap must be installed in the vented drainage pipe. The drain pipe from the coffee machine must be fastened to the pipe trap and vented.</p> <p>The WMF specific conditions for water, power and drainage must be observed at all times.</p> <p>An opening is required in accordance to the elevation drawing for the connection from below the counter. Alternatively the connections for electricity, water and drainage can be taken through the body of the machine from the back in the indicated <input type="checkbox"/> area (see the elevation drawing and side view).</p> <p>A WMF water softener is required to comply with WMF specifications if the water is harder than 90 to 160 ppm. Please follow the WMF connection specifications.</p> <p>CAUTION: The water pressure must not exceed 0.6 MPa (6 bar) at any time.</p>