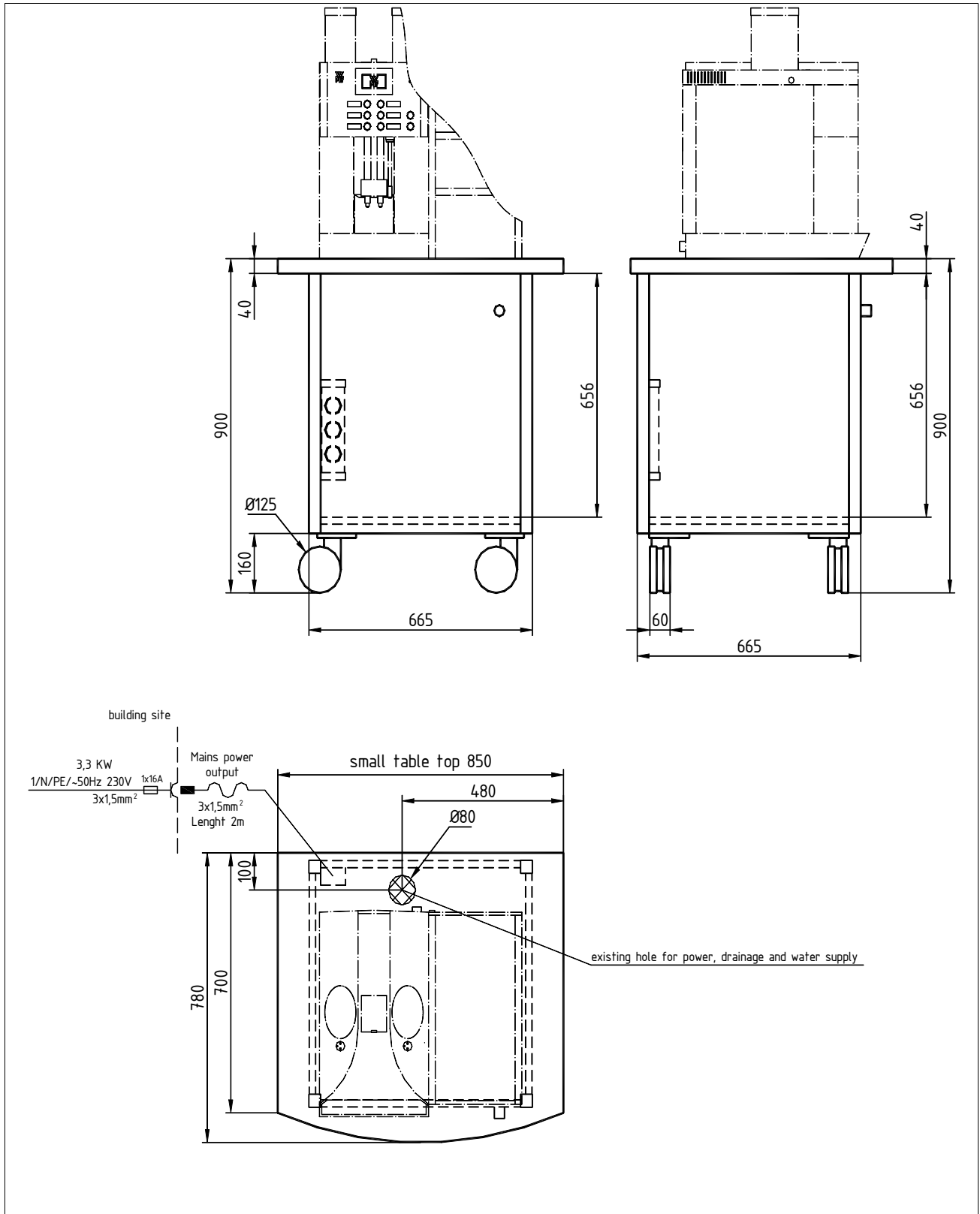


WMF Coffee Machines

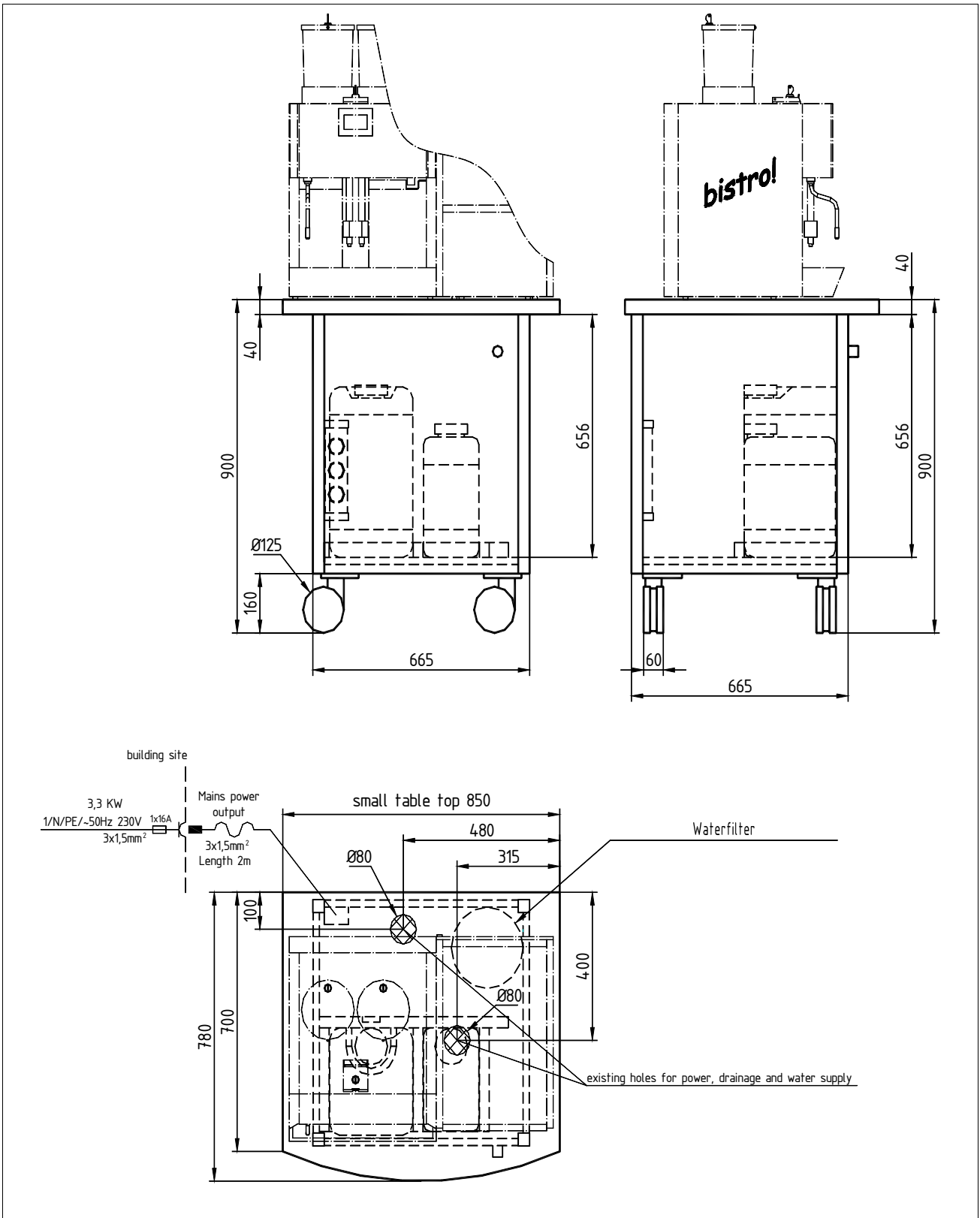
Planning Information

Mobile Coffee Station 03 9491 0001



WMF Coffee Machines

Mobile Coffee Station 03 9491 0002

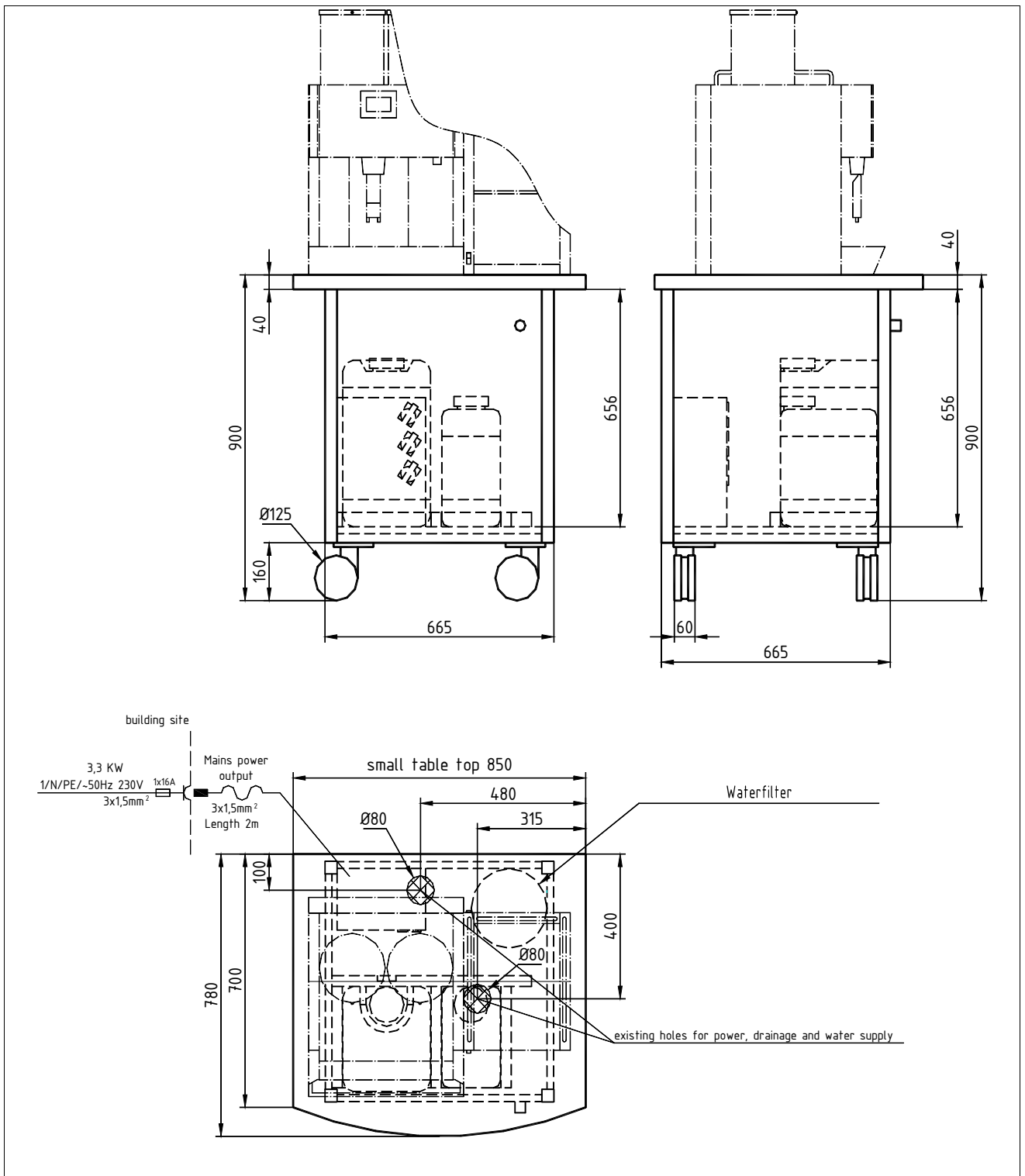


WMF AG Coffee Machines
D-73309 Geislingen/Steige Germany
Telephone + 49 73 31 - 25 87 68
Email: Gastronomie@wmf.de
Order No. 63.8429.0390

Fax 0 73 31/25 81 69
Website: <http://www.wmf.de>

WMF Coffee Machines

Mobile Coffee Station 03 9491 0003

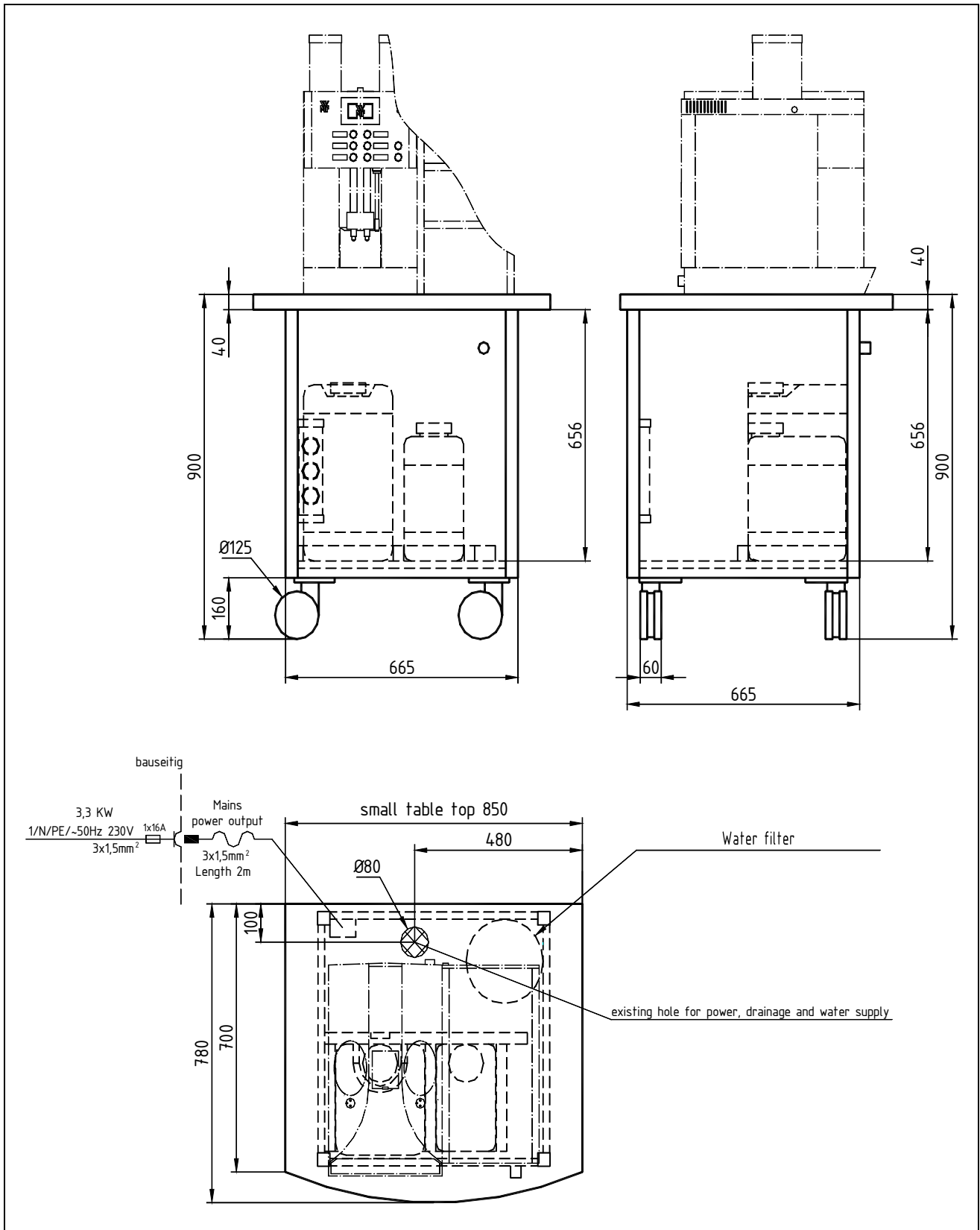


WMF AG Coffee Machines
D-73309 Geislingen/Steige Germany
Telephone + 49 73 31 - 25 87 68
Email: Gastronomie@wmf.de
Order No. 63.8429.0390

Fax 0 73 31/25 81 69
Website: <http://www.wmf.de>

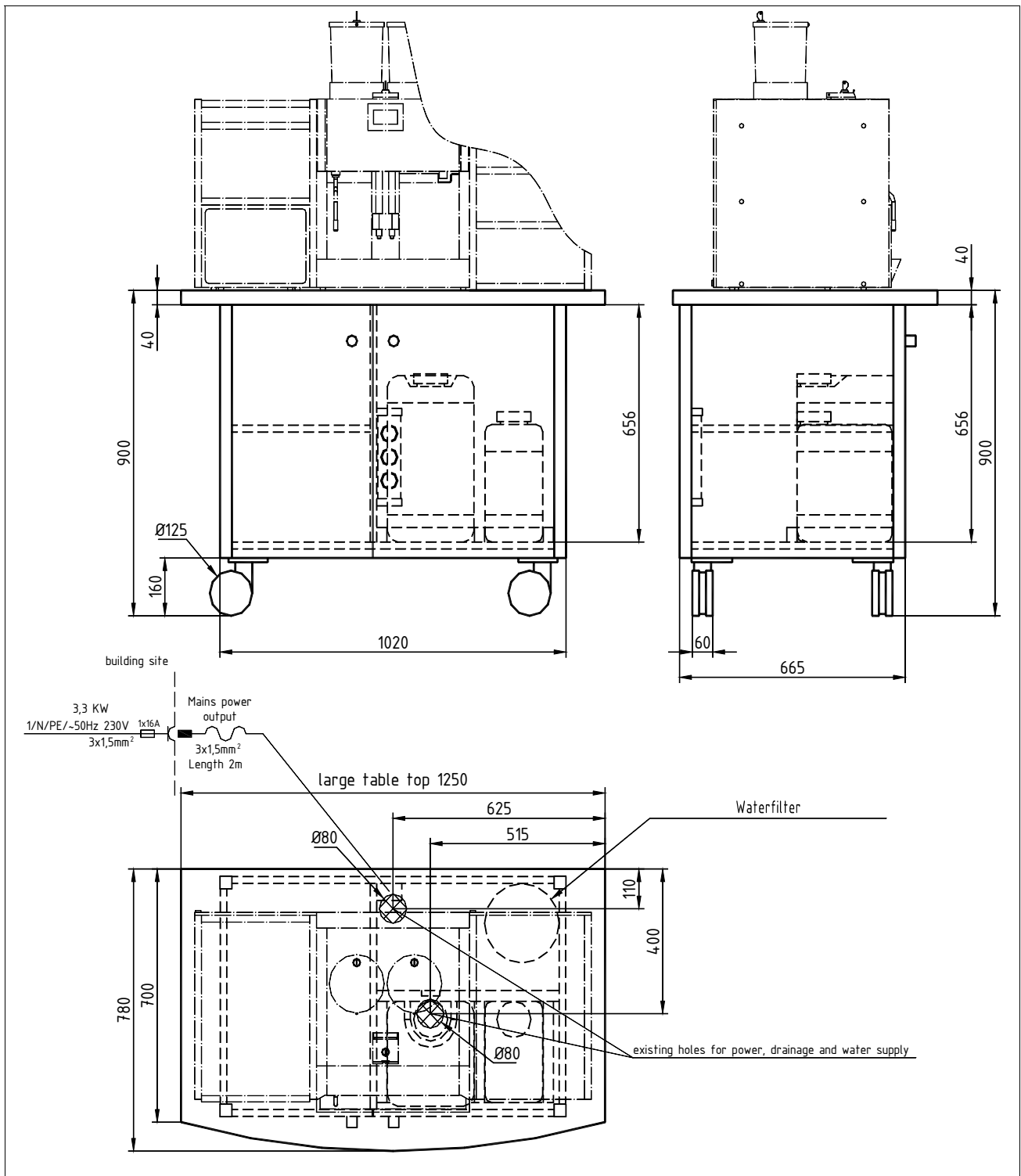
WMF Coffee Machines

Mobile Coffee Station 03 9491 0004



WMF Coffee Machines

Mobile Coffee Station 03 9491 0011

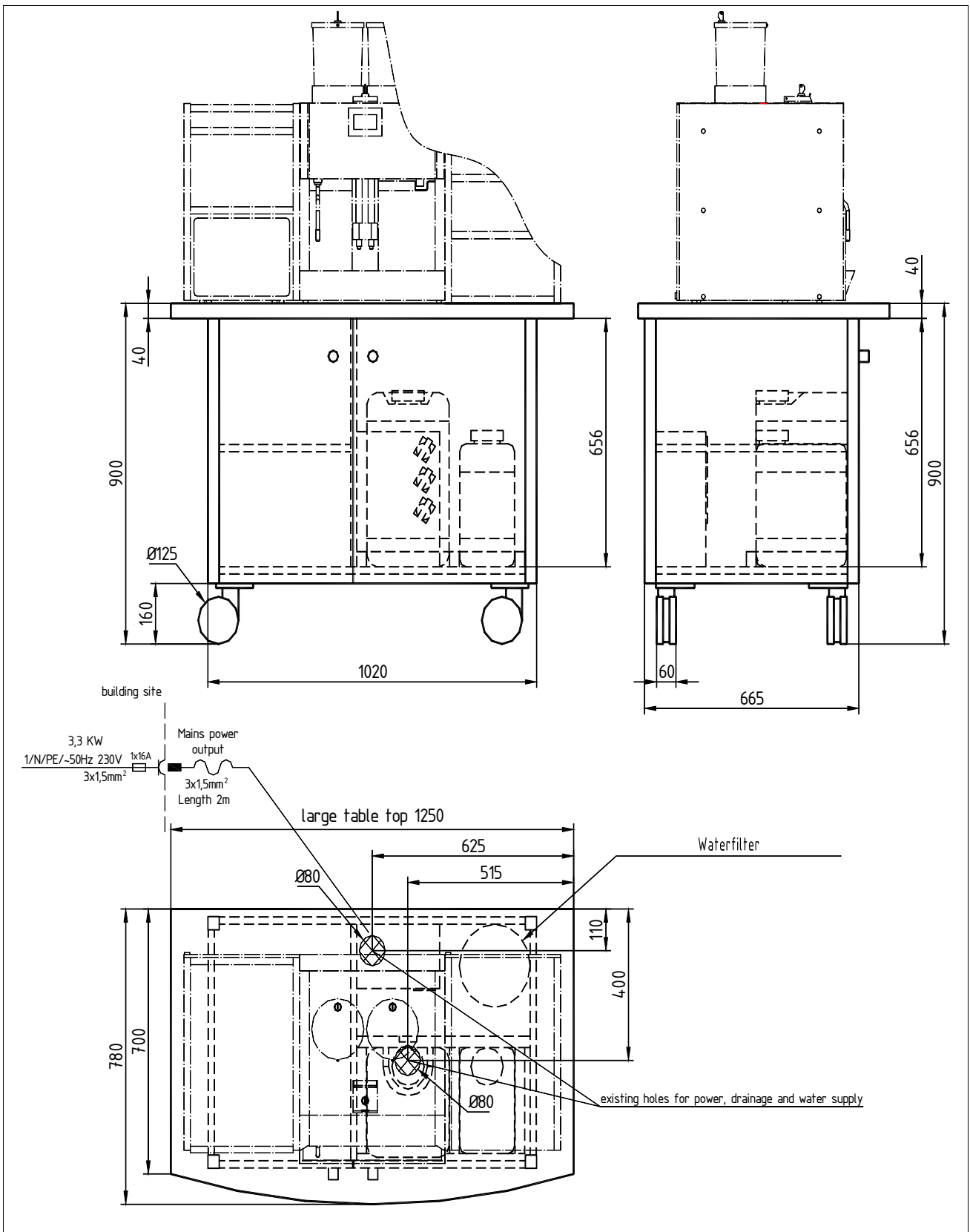


WMF AG Coffee Machines
D-73309 Geislingen/Steige Germany
Telephone + 49 73 31 - 25 87 68
Email: Gastronomie@wmf.de
Order No. 63.8429.0390

Fax 0 73 31/25 81 69
Website: <http://www.wmf.de>

WMF Coffee Machines

Mobil Coffee Station 03 9491 0012



WMF AG Coffee Machines
D-73309 Geislingen/Steige Germany
Telephone + 49 73 31 - 25 87 68
Email: Gastronomie@wmf.de
Order No. 63.8429.0390

Fax 0 73 31/25 81 69
Website: <http://www.wmf.de>

WMF Coffee Machines

Data Sheet Mobile Coffee Station Series 9491

Type:	<p>03 9491 0001 Mobile Station, small table top, 230V/50/1, ideal for a WMF Presto (Water tank version) including vending system (e.g. coin checker) and refrigerator.</p> <p>03 9491 0002 Mobile Station, small (narrow) table top, 230V/50/1, ideal for a WMF Bistro (Low pressure variant) including vending system (e.g. coin checker) and refrigerator.</p> <p>03 9491 0003 Mobile Station, small table top, including technical attachment 03 9490 1000 for sites without own water supply and drainage. 230V/50/1, Table top ideal for a WMF coffee machine with vending system (e.g. coin checker) and refrigerator.</p> <p>03 9491 0004 Mobile Station, small table top, including technical attachment 03 9492 1001 for sites without own water supply and drainage. 230V/50/1, Table top ideal for a WMF coffee machine Presto!, 1800 S and 2000S with vending system (e.g. coin checker) and refrigerator.</p> <p>03 9491 0011 Mobile Station, large (wide) table top, ideal for a WMF Bistro (Low pressure variant) including vending system (e.g. coin checker) and with 1 refrigerator and 1 cupboard.</p> <p>03 9490 0012 Mobile Station, large table top, including technical attachment 03 9490 1000 for sites without own water supply and drainage. Table top ideal for a WMF Bistro or WMF combiNation S or E or Cafemat ! with vending system (e.g. coin checker) and with 1 refrigerator and 1 cupboard.</p> <p>03 9490 1000 Technical attachment for coffee machines WMF Bistro or WMF combiNation S and E or Cafemat ! for sites without own water supply and drainage (Counter installation or Mobile Station, 230V/50/1)</p> <p>03 9492 1001 Technical attachment for coffee machines WMF Presto!, 1800 S und 2000 S for sites without own water supply and drainage (Counter installation or Mobile Station, 230V/50/1)</p>
Option:	Depending on table size mobile station can include coin checker/coin changer, or card reader as well as attached units, milk cooler, refrigerator, cupboard
Degree of protection:	IPX0
Protection class:	Protection Class I
Perceptible heat emission:	0.21 kWh/h in standby mode
Perceptible heat emission:	3.28 kWh/h in maximum mode
Continuous sound pressure level (Lpa)	< 70 dB (A)
Accessories:	Technical attachment for water supply and drainage (installed in substructure), water filter

WMF Coffee Machines

Miscellaneous:	Technical attachment 03 9490 1000 dimension: W 565 mm x D 650 mm x H 640 mm in connection with a WMF coffee machine - suitable for installation in non-WMF mobile stations Technical attachment 03 9492 1001 dimension: W 540 mm x D 600 mm x H 600 mm in connection with a WMF coffee machine - suitable for installation in non-WMF mobile stations
Empty Weight:	Mobile Station small (narrow) approx. 65 kg (without coffee machine and accessories) Mobile Station large (wide) approx. 80 kg (without coffee machine and accessories)
Miscellaneous:	4 castors, front castors with brake, Small (narrow) version with front doors opening left
Electric Connection:	<p>The following specifications for the electrical connection and the cited standards are applicable for connecting machines in EU countries. If applicable, additional national regulations must be observed. Outside the EU the acceptance of the cited standards must be checked by the persons who market the machines.</p> <p>The building electrical system must comply with IEC 364. For increased safety the device must be connected to a residual current circuit breaker (RCSB) with 30 mA rated fault current (EN 61008). A standard single-phase electrical socket must be installed near the device. If the power connection cord of this device has been damaged, it must be replaced by our customer service or by a similarly qualified person. The power cord must not be in contact with hot objects. The electrical socket is part of the provided building installation.</p>