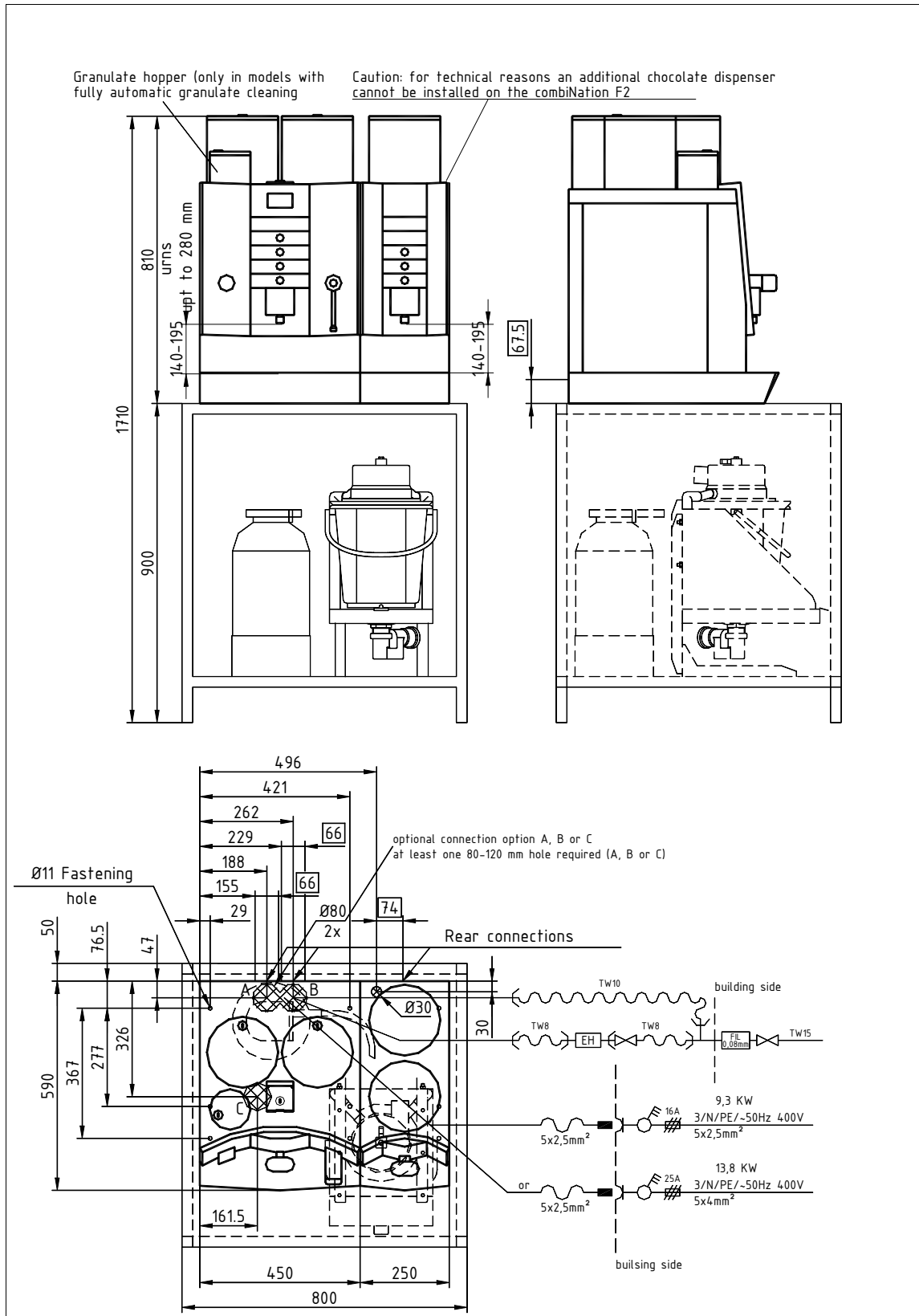


WMF COFFEE MACHINES

WMF Planning Info combiNation F2 series 8700

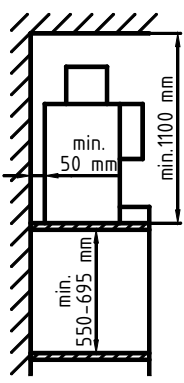


WMF COFFEE MACHINES

Data sheet for combiNation F2 series 8700

Base models: other types different from the base models can be combined with the modular structure of the combiNation F2 series.	03 8700 0210	aluminium design	3 / N /PE, 50Hz, 400V, 9.3 kW, fuse protection building
	03 8700 0211	beech design	3x16 A, (electrical feed 5x2.5 mm²), 1 supply tank 4 L,
	03 8700 0212	anthracite design	hot water metering, fixed front panel, height below
	03 8700 0213	basic	140 mm and 195 mm, manual granulate cleaning
	03 8700 0214	aluminium design	3 / N /PE, 50Hz, 400V, 13.8 kW, fuse protection building
	03 8700 0215	beech design	3x25 A, (electrical feed 5x4 mm²), 1 supply tank 4 L, hot
	03 8700 0216	anthracite design	water metering, fixed front panel, height below 140 mm
	03 8700 0217	basic	and 195 mm, manual granulate cleaning
	03 8700 0220	aluminium design	3 / N /PE, 50Hz, 400V, 9.3 kW, fuse protection building
	03 8700 0221	beech design	3x16 A, (electrical feed 5x2.5 mm²), 1 supply tank 4 L,
	03 8700 0222	anthracite design	hot water metering, height-adjustable front panel,
	03 8700 0223	basic	height below 140 mm, 195 mm and, on the left side
	03 8700 0224	aluminium design	only, 280 mm, manual granulate cleaning
	03 8700 0225	beech design	3 / N /PE, 50Hz, 400V, 13.8 kW, fuse protection building
	03 8700 0226	anthracite design	3x16 A, (electrical feed 5x4 mm²), 1 supply tank 4 L, hot
	03 8700 0227	basic	water metering, height-adjustable front panel, height
	03 8700 0230	aluminium design	below 140 mm, 195 mm and, on the left side only,
	03 8700 0231	beech design	280 mm, manual granulate cleaning
	03 8700 0232	anthracite design	3 / N /PE, 50Hz, 400V, 9.3 kW, fuse protection building
	03 8700 0233	basic	3x16 A, (electrical feed 5x2.5 mm ²), 1 supply tank 4 L, hot
	03 8700 0234	aluminium design	water metering, fixed front panel, height below 140 mm
	03 8700 0235	beech design	and 195 mm, fully automatic granulate cleaning
	03 8700 0236	anthracite design	3 / N /PE, 50Hz, 400V, 13.8 kW, fuse protection building
03 8700 0237	basic	3x25 A, (electrical feed 5x4 mm ²), 1 supply tank 4 L, hot	
03 8700 0240	aluminium design	water metering, fixed front panel, height below 140 mm	
03 8700 0241	beech design	and 195 mm, fully automatic granulate cleaning	
03 8700 0242	anthracite design	3 / N /PE, 50Hz, 400V, 9.3 kW, fuse protection building	
03 8700 0243	basic	3x16 A, (electrical feed 5x2.5 mm²), 1 supply tank, hot	
03 8700 0244	aluminium design	water metering, height-adjustable front panel, height	
03 8700 0245	beech design	below 140 mm, 195 mm and, on the left side only,	
03 8700 0246	anthracite design	280 mm, fully automatic granulate cleaning	
03 8700 0247	basic	3 / N /PE, 50Hz, 400V, 13.8 kW, fuse protection building	
03 8700 0250	aluminium design	3x16 A, (electrical feed 5x4 mm²), 1 supply tank, hot	
03 8700 0251	beech design	water metering, height-adjustable front panel, height	
03 8700 0252	anthracite design	below 140 mm, 195 mm and, on the left side only,	
03 8700 0253	basic	280 mm, fully automatic granulate cleaning	
03 8700 0254	aluminium design	3 / N /PE, 50Hz, 400V, 9.3 kW, fuse protection building	
03 8700 0255	beech design	3x16 A, (electrical feed 5x2.5 mm²), 1 supply tank 4 L,	
03 8700 0256	anthracite design	fixed front panel, height below 140 mm and 195 mm,	
03 8700 0257	basic	manual granulate cleaning	
			3 / N /PE, 50Hz, 400V, 13.8 kW, fuse protection building
			3x25 A, (electrical feed 5x4 mm²), 1 supply tank 4 L,
			fixed front panel, height below 140 mm and 195 mm,
			manual granulate cleaning
	Design rear panels in basic, aluminium, beech or anthracite design on request		
Brewing process:	filtered coffee		

WMF COFFEE MACHINES

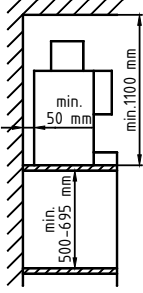
Output per hour:	03 8700 0210-213 490 cups of filter coffee, 72 L hot-water output, total 03 8700 0220-223 490 cups of filter coffee, 72 L hot-water output, total 03 8700 0230-233 490 cups of filter coffee, 72 L hot-water output, total 03 8700 0240-243 490 cups of filter coffee, 72 L hot-water output, total 03 8700 0250-253 490 cups of filter coffee, 72 L hot-water output, total 03 8700 0214-217 560 cups of filter coffee, 108 L hot-water output, total 03 8700 0224-227 560 cups of filter coffee, 108 L hot-water output, total 03 8700 0234-237 560 cups of filter coffee, 108 L hot-water output, total 03 8700 0244-247 560 cups of filter coffee, 108 L hot-water output, total 03 8700 0254-257 560 cups of filter coffee, 108 L hot-water output, total
Option:	Self-service model,
Accessories:	water softener, sediment separator, chocolate dispenser, cupboard
Degree of protection:	IPX0
Protection class:	Protection class I
Perceptible heat emission:	0.2 kW/h in standby mode
Perceptible heat emission:	9.15 kWh/h in maximum mode for all types with rated power 9.3 kW 13.65 kWh/h in maximum mode for all types with rated power 13.8 kW
Continuous sound pressure level (L_{pa})	< 65 dB (A)
Water connection:	1/2" (TW 15)
Flow pressure:	at least 0.2 MPa, at 8 L min., maximum 0.6 MPa
Miscellaneous:	wet coffee grounds discharge Caution: for technical reasons an additional chocolate dispenser cannot be mounted on the combiNation F2.
Drain:	DN 40 (1 1/2"), gradient at least 2%
Empty weight:	ca. 98 kg
Installation clearances:	<p>For the installation a minimum clearance of 50 mm to the back wall and at the sides to walls or other non-WMF equipment is required for functional, service and safety reasons. A clear height of 1100 mm from the top of the installation area is required. The height of the installation area from the top of the floor should be at least 700 mm and a maximum of 900 mm. Installation of accessories underneath the unit (such as water filter or sediment separator) requires a clearance of 550 and 695 mm, depending on the configuration and the local installation conditions.</p> <p>If the connections of the machine are down through the counter, please also consider the space required by the connection lines, which may restrict the usable space in the substructure.</p> 

WMF COFFEE MACHINES

Electrical connection:	<p>The following specifications for the electrical connection and the cited standards are applicable for connecting machines in EU countries. If applicable, additional national regulations must be observed. Outside the EU the acceptance of the cited standards must be checked by the persons who market the machines.</p> <p>The building electrical system must comply with IEC 364. For increased safety the device should be protected by an earth-leakage circuit breaker with 30 mA rated fault current (EN 61008). A standard single-phase electrical outlet or a standard 5-pin three-phase electrical outlet complying with EN 60309 must be installed near the device or 30 cm below the top of the counter on the back or side of the counter. If the power connection cord of this device has been damaged, it must be replaced by our customer service or by a similarly qualified person. If the machine is permanently connected to the building power supply, a circuit breaker that disconnected all poles (main switch) in accordance with EN 60947 must be installed with at least 3 mm contact separation must be installed to protect the machine; the disconnecting device is recommended for a flexible connection. The power cord must not be in contact with hot objects. The main switch and the electrical outlet are part of the building installation. The machine must not be installed with a fixed building connection when used with a trolley (mobile station).</p> <p><u>Important information:</u> To prevent any interference with our shielded data lines by equipotential currents between the devices, an additional equipotential bonding should be installed for devices connected to an accounting system. (See IEC 364)</p>
Water feed and drainage:	<p>A sufficiently large, easily accessible stop cock (preferably a ball valve) and a dirt filter with a 0.080 mm mesh must be installed in the water pipe under the counter.</p> <p>If a sediment separator is installed, a drainage connection must be available towards the back of the bottom cupboard about 100 mm above the installed floor or socket.</p> <p>If the drainage connection does not have a sediment separator, the drain must be installed at the rear panel of the bottom cupboard 50 cm from the top of the counter.</p> <p>A pipe syphon must be installed in the vented drainage pipe. (Fit hose connection in the funnel with a hose ring holder)</p> <p>The WMF-specific conditions for water, power and effluent must be observed at all times.</p> <p>For the connection from below through the counter an opening is required in accordance with the drawing (see elevation drawing) or a hole approx. 80 to 120 mm in diameter. Alternatively the connections for electricity, water and drainage can be taken through the body of the machine from the back in the indicated <input type="checkbox"/> area (see the elevation and side view).</p> <p>If the water contains more than 160 ppm carbonate, a WMF water filter must be installed.</p> <p>CAUTION: The static water pressure must not exceed 0.6 MPa (6 bar).</p>

WMF COFFEE MACHINES

Data sheet for sediment separator series 9011

Type:	03 9011 0001 sediment separator for coffee grounds (wet discharge)
Capacity:	sediment container capacity ca. 3.5 kg coffee grounds, corresponding to ca. 600 cups of coffee
Feed:	flexible hose from Programat 4, Programat GV or combiNation F
Drain:	1 ½" (DN 40) gradient at least 2%
Accessories:	including WMF pipe syphon 33 2163 2000. Fitted with capacitive fill level sensor and a plug for connection to the coffee machine controller.
Installation information:	suitable for standing or suspended installation. Only install with pipe syphon. The sediment separator can be installed as low as 579 mm and as high as 695 mm with the adjustable feet, depending on the position and height of the pipe syphon and drain
Empty weight:	15 kg
Installation clearances:	<p>Installation of accessories underneath the unit (such as water filter or sediment separator) requires a clearance of 500 to 695 mm, depending on the configuration and the local installation conditions.</p> <p>If the connections of the coffee machine are down through the counter, please also consider the space required by the connection lines, which may restrict the usable space in the substructure.</p> 
Ventilation of undercounter cupboards:	<p>the undercounter cupboards must be well ventilated for installation of sediment separators to prevent dampness (vents, holes).</p> <p>The air inlet at the lowest point and the air outlet at the highest point must be about 5 dm².</p> <p>The sediment separator must be mounted in the air flow between the air inlet and the air outlet.</p>
Water drain:	<p>The drain for the sediment separator is to be connected to a building pipe or a hose with a diameter of at least 1 ½" (DN 40).</p> <p>The drain must have a sufficient gradient to prevent blockage (min. 2 cm/m).</p> <p>Only a pipe syphon is to be mounted to prevent odours.</p> <p>If the syphon is not mounted directly at the drain trough, a vent must be installed between the machine and the syphon to prevent blockage under unfavourable drainage conditions.</p> <p>As an alternative to the odour stopper the connection to the flange can also be made with standard plastic drain pipe using a union nut with G 1 ½".</p>

WMF COFFEE MACHINES

