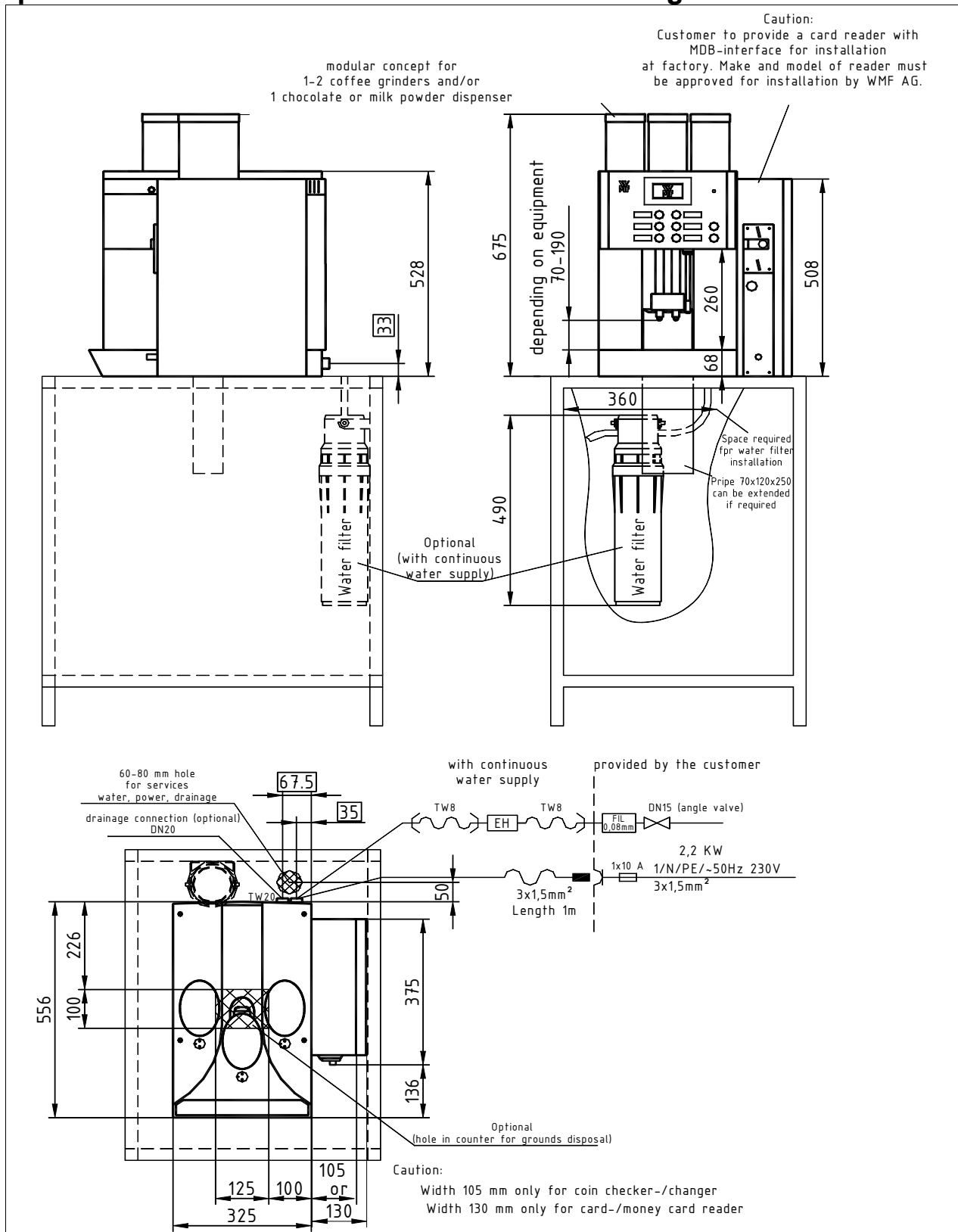


WMF COFFEE MACHINES

WMF Planning Info

presto ! series 1400 with coin checker/coin changer/bank card reader



WMF Aktiengesellschaft Vertrieb Kaffeemaschinen
D-73309 Geislingen/Steige Germany
Phone 0 73 31 - 25 8768
E-mail: Gastronomie@wmf.de

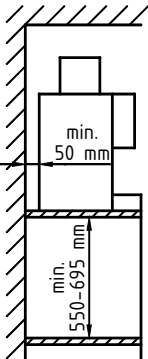

Fax 0 73 31/25 72 95
Internet: <http://www.wmf.de>

WMF COFFEE MACHINES

presto ! series 1400 with coin checker/coin changer/bank card reader

<p>The article numbers in the table represent only a cross-section of the complete range of articles</p> <p>The WMF Presto series is a modular system and can be customised for the requirements of the customer.</p>	<p>03 1400 MUEP Presto 1 / N / PE, 50Hz, 230V, 2.2 kW, fuse protection building 10A, fixed water connection 1/2", drain DN 19, fitted with coin checker, 1 lockable coffee grinder, 1 lockable milk powder dispenser, hot water dispenser, espresso, café crème, cappuccino, latte macchiato, dual coffee spout 70 – 190 mm,</p> <p>03 1400 GEKL Presto 1 / N / PE, 50Hz, 230V, 2.2 kW, fuse protection building 10A, fixed water connection 1/2", drain DN 19, fitted with bank card reader housing width 130 mm, 2 lockable coffee grinders, 1 lockable milk powder dispenser, hot water dispenser, espresso, café crème, cappuccino, latte macchiato, dual coffee spout 70 – 190 mm,</p> <p>03 1400 KALE Presto 1 / N / PE, 50Hz, 230V, 2.2 kW, fuse protection building 10A, fixed water connection 1/2", drain DN 19, 2 lockable coffee grinders, 1 lockable milk powder dispenser, card reader housing – width 130 mm - with MDB interface, hot water dispenser, espresso, café crème, cappuccino, latte macchiato, dual coffee spout 70 – 190 mm, amber lighting,</p> <p>03 1400 MUEW Presto 1 / N / PE, 50Hz, 230V, 2.2 kW, fuse protection building 10A, fixed water connection 1/2", drain DN 19, fitted with coin changer, 1 lockable coffee grinder, 1 lockable milk powder dispenser, hot water dispenser, espresso, café crème, cappuccino, latte macchiato, dual coffee spout 70 – 190 mm,</p> <p>Only card readers with an MDB interface can be installed in the WMF Presto attached housing. Information on the makes and types that can be installed can be obtained on request with exact information on the planned card reader from WMF.</p>
Brewing process:	speciality coffees and drinking chocolate with and without milk or milk powder topping, drinking chocolate made of chocolate powder, hot water and addition of milk.
Daily output:	max. 150 cups of specialty coffees with and without added milk or milk foam, 10 L hot water total output per day
Option:	„Twintopping“ (for chocolate and/or milk topping powder) with 2 chambers 0.5 kg each, lockable bean container 1 kg , „Aquaflex“ switchable water connection types for tank or fixed water connection operation, steam dispenser , integrated milk cooler , indirect illumination in various colours, with fixed water connection water preparation filter (dimensions 126 mm Ø x 490 mm height), drainage connection DN 19 , Plug & Clean feature only available for Presto Series with continuous water supply..
Caution special model:	The WMF Presto series with coin checker/changer/card reader housing is only approved for installation of a: WMF coin checker, coins from 5 cents to 2 euros and WMF tokens WMF coin changer or previously approved by WMF AG and by the customer for installation of a card reader with MDB interface at the factory.
Accessories:	multitool, cleaning brush, basic equipment decalcifier, cleaning tablets, milk cleaner
Degree of protection:	IPX0
Protection class:	Protection class I
Perceptible heat emission:	0.11 kW/h in standby mode
Perceptible heat emission:	2.11 kW/h in maximum mode
Continuous sound pressure level (L_{pa})	< 70 dB (A)
Water connection:	DN 15, (3/8") e.g. angle valve
Flow pressure:	with fixed water connection at least 0.2 MPa (2.0 bar), at 2 L min.

WMF COFFEE MACHINES

Miscellaneous:	coffee machine with dry residue discharge into an integrated drawer or optional with grounds disposal into a building-side container
Drain:	drip trough without drain. Optional drain DN 19, gradient at least 2%
Empty weight:	ca. 35-40 kg
Installation clearances: 	<p>For the installation a minimum clearance of 50 mm to the back wall and at the sides to walls or other non-WMF equipment is required for functional, service and safety reasons.</p> <p>A clear height of about 1100 mm from the top of the installation area is required. The height of the installation area from the top of the floor should be at least 850 mm. Installation of accessories underneath the unit (such as water filter) requires sufficient space for the water filter (126 mm diameter and 490 mm height).</p> <p>If the connections of the machine are down through the counter, please also consider the space required by the connection lines, which may restrict the usable space in the substructure.</p>
Electrical connection:	<p>The following specifications for the electrical connection and the cited standards are applicable for connecting machines in EU countries. If applicable, additional national regulations must be observed. Outside the EU the acceptance of the cited standards must be checked by the persons who market the machines.</p> <p>The building electrical system must comply with IEC 364. For increased safety the device should be protected by an earth-leakage circuit breaker with 30 mA rated fault current (EN 61008). A standard electrical outlet compliant with EN 60309 must be installed near the device or 30 cm below the top of the counter at the back or side of the undercounter structure for a single-phase connection. If the power connection cord of this device has been damaged, it must be replaced by our customer service or by a similarly qualified person. If the machine is permanently connected to the building power supply, a circuit breaker that disconnected all poles (main switch) in accordance with EN 60947 must be installed with at least 3 mm contact separation must be installed to protect the machine; the disconnecting device is recommended for a flexible connection. The power cord must not be in contact with hot objects. The electrical outlet is part of the building installation. The machine must not be installed with a fixed building connection when used with a trolley (mobile station).</p> <p><u>Important information:</u></p> <p>To prevent any interference with our shielded data lines by equipotential currents between the devices, an additional equipotential bonding should be installed for devices connected to an accounting system. (See IEC 364)</p>
Water feed and drainage:	<p>A sufficiently large, easily accessible stop cock (preferably a ball valve) and a dirt filter with a 0.080 mm mesh must be installed in the water pipe under the counter.</p> <p>If there is a drainage connection, the drain must be installed at the rear panel of the bottom cupboard 50 cm from the top of the counter.</p> <p>A pipe syphon must be installed in the vented drainage pipe. (Fit hose connection in the funnel with a hose ring holder) The WMF-specific conditions for water, power and effluent must be observed at all times.</p> <p>For the connection from below through the counter an opening is required in accordance with the drawing (see elevation drawing) or a hole approx. 80 to 120 mm in diameter. Alternatively the connections for electricity, water and drainage can be taken through the body of the machine from the back in the indicated  area (see the elevation and side view).</p> <p>If the water contains more than 5 ppm carbonate, a WMF water filter must be installed.</p> <p>CAUTION: The static water pressure must not exceed 0.6 MPa (6 bar).</p>