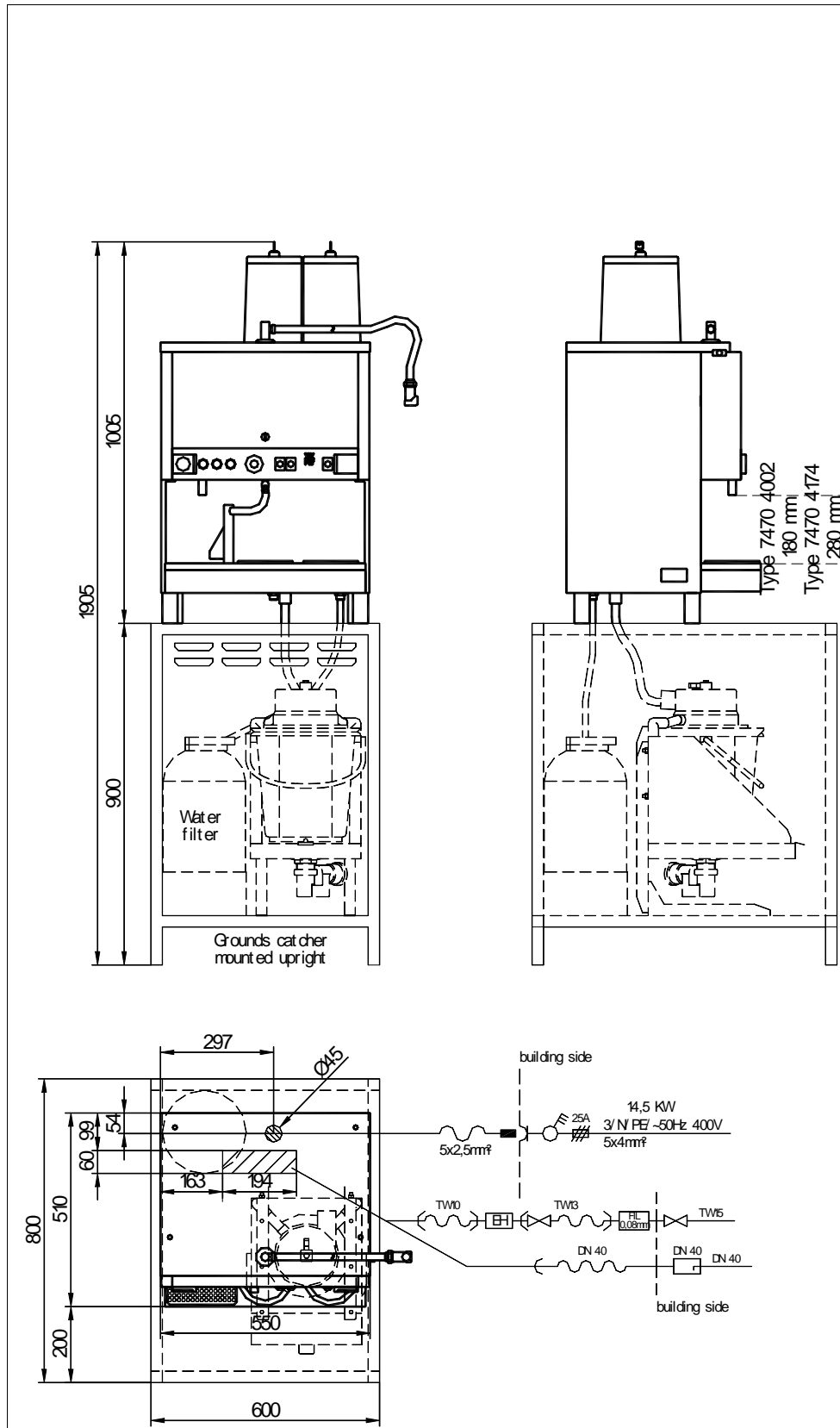


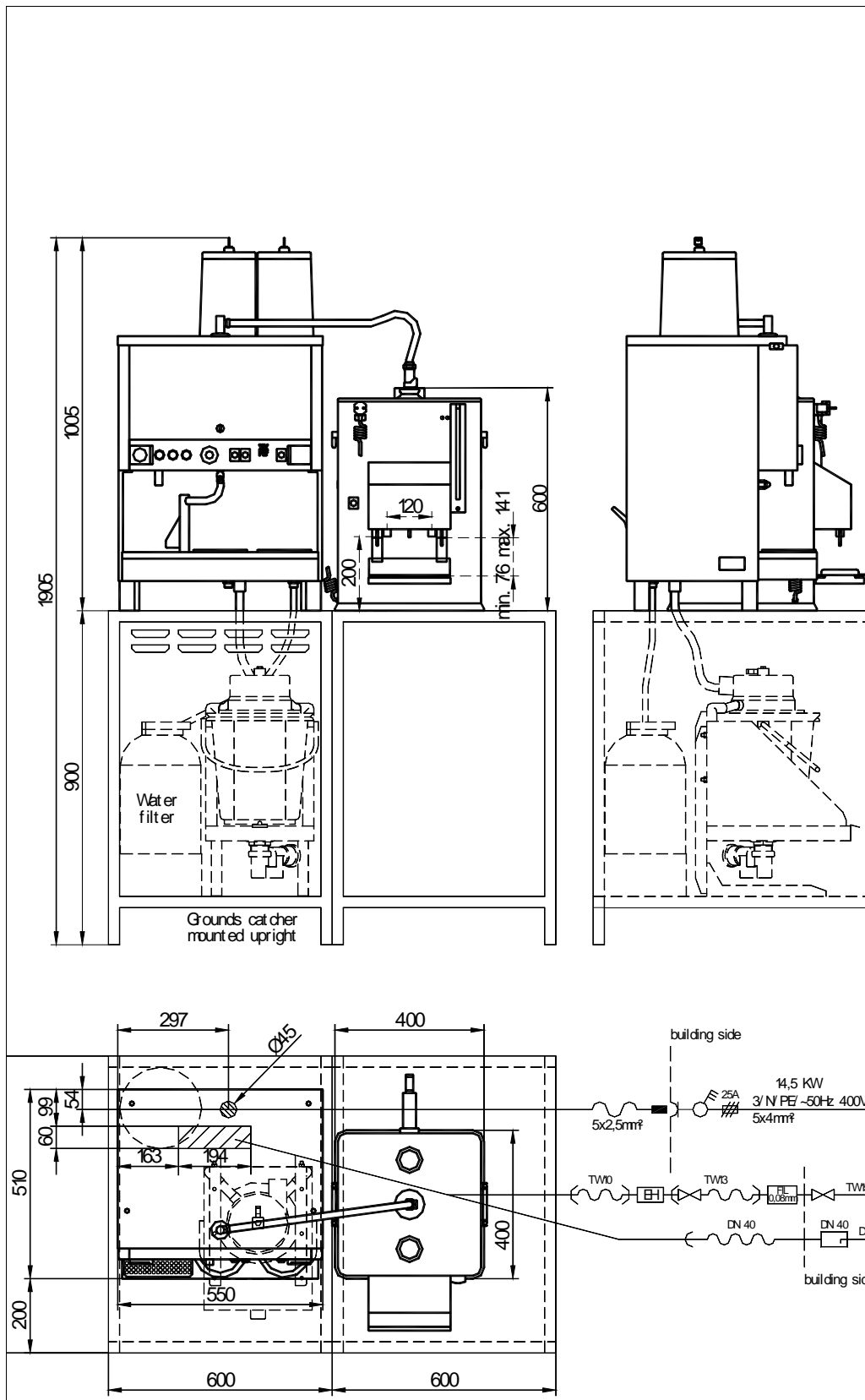
WMF COFFEE MACHINES

WMF Planning Info Programat GV System



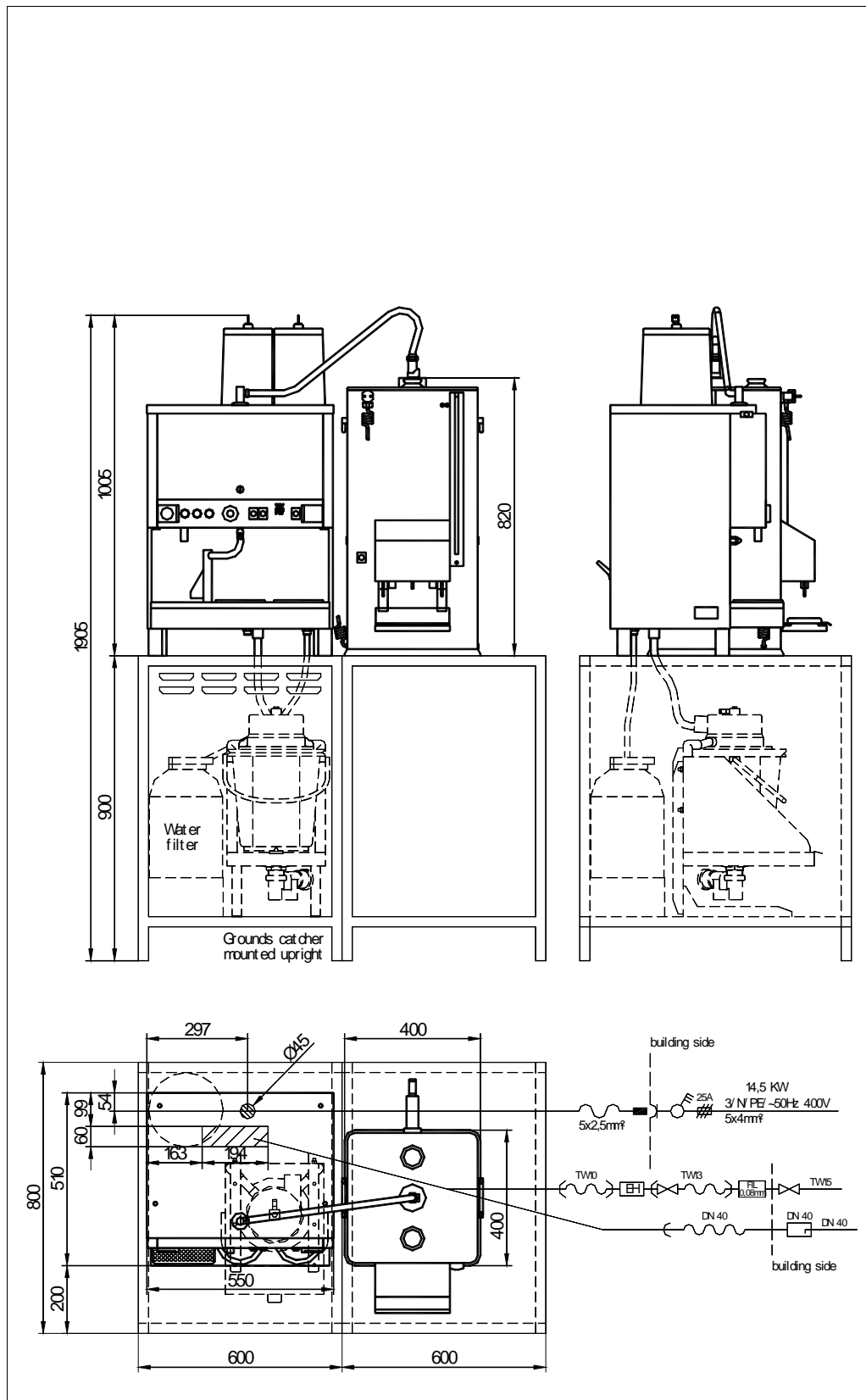
WMF COFFEE MACHINES

Programat GV with 20 L storage urn



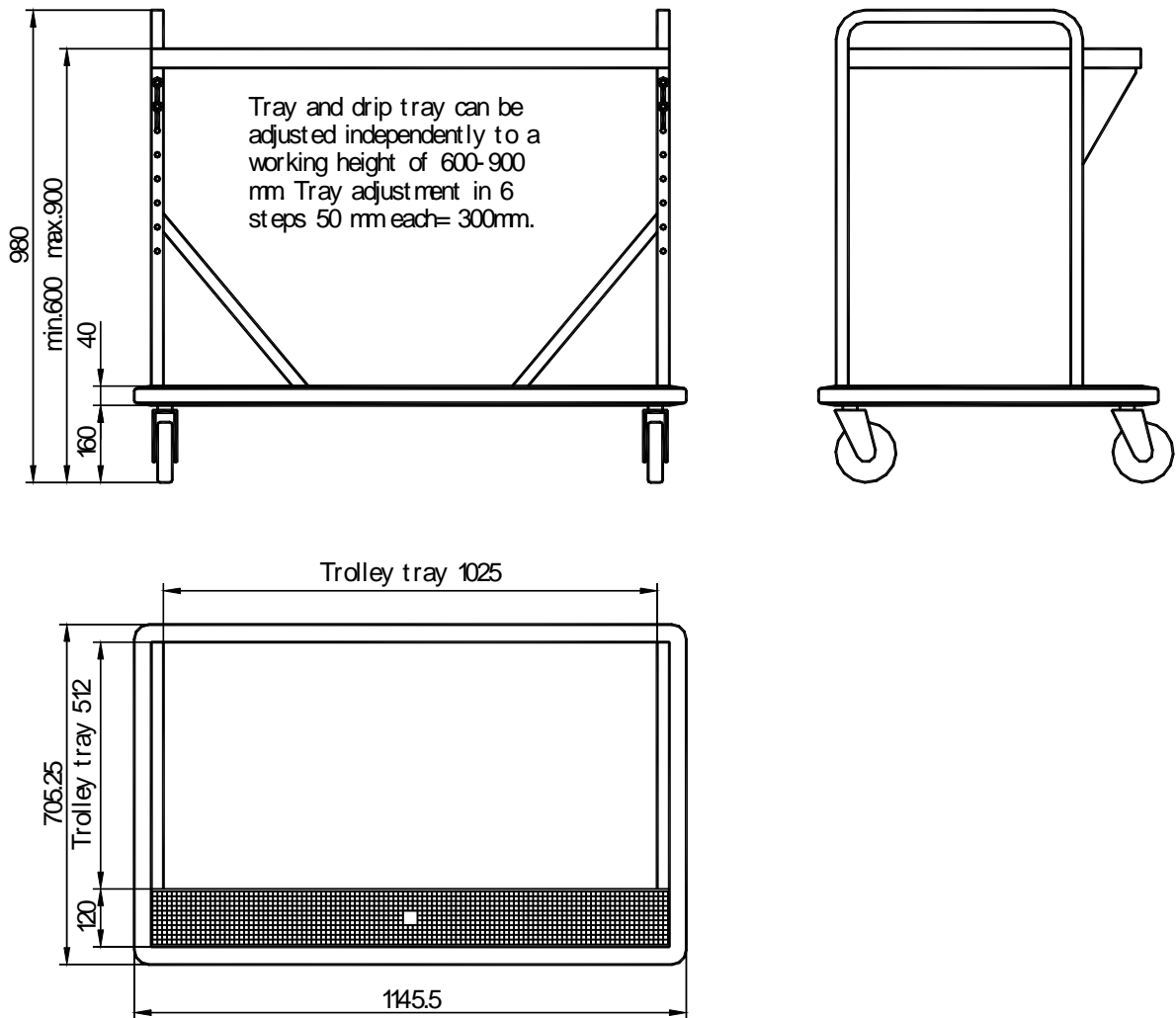
WMF COFFEE MACHINES

Programat GV with 40 L storage urn



WMF COFFEE MACHINES

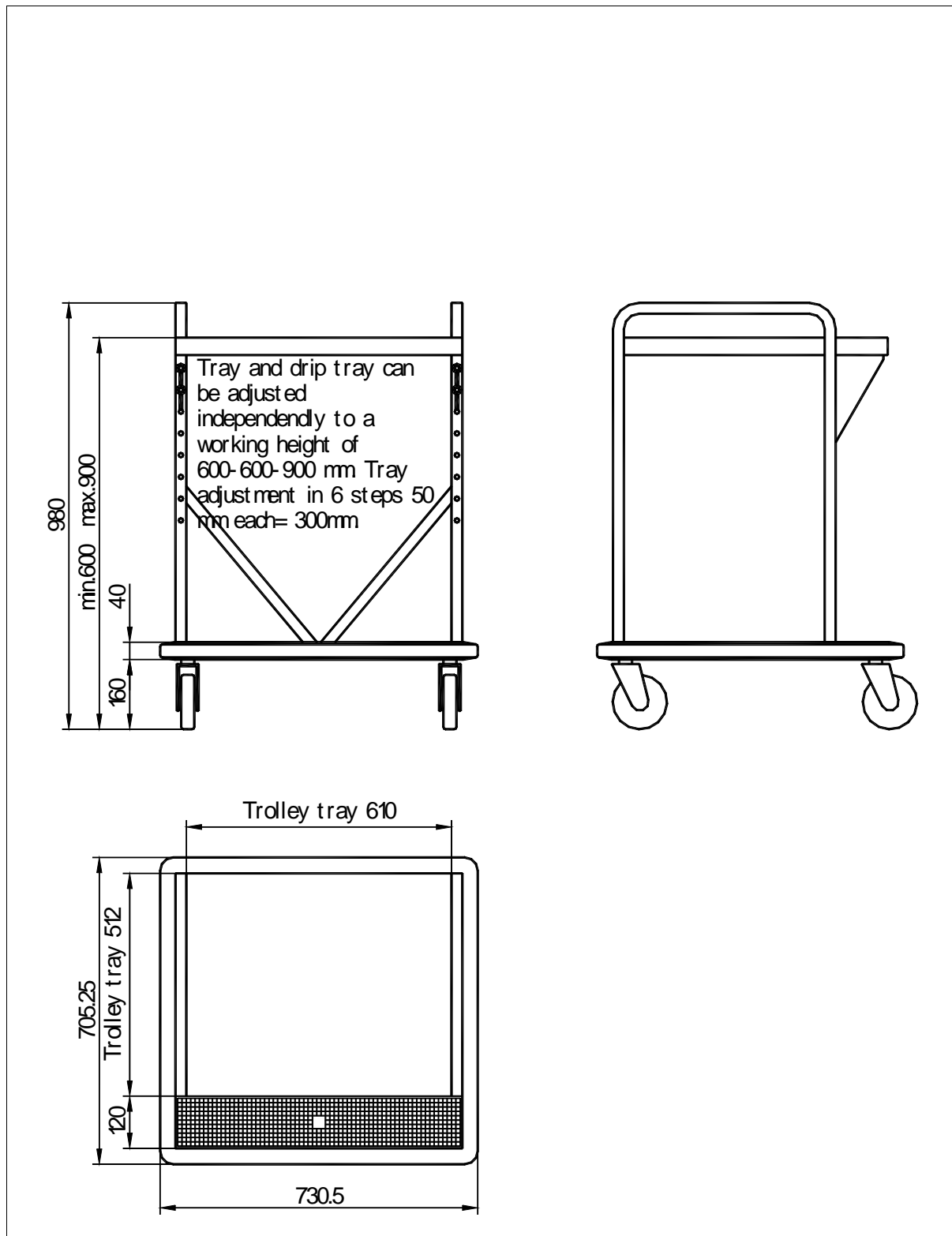
Trolley (large/small) for P-GV and 20 L/40 L storage urn



Trolley, large

WMF COFFEE MACHINES

Trolley (large/small) for P-GV and 20 L/40 L storage urn



Trolley, small

WMF COFFEE MACHINES

Data sheet for Programat GV System

Type:	03 7470 4002 3 / N / 50 Hz, PE, 400V, 14.5 kW, fuse protection building 3x25 A 03 7470 4134 3 / N / PE, 50Hz, 400V, 14.5 kW, fuse protection building 3x25 A, with timer 03 7470 4174 3 / N / PE, 50Hz, 400V, 14.5 kW, fuse protection building 3x25 A, for direct filling of pots, undercounter height 280 mm, without hot plates
Brewing process:	filtered coffee, 2 varieties
Output per hour:	volume brewing 100 L coffee, 20 L hot water pot brewing 60 L coffee, 60 L hot water
Degree of protection:	IPX0
Protection class:	Protection class I
Perceptible heat emission:	0.68 kWh/h in standby mode
Perceptible heat emission:	13.5 kWh/h in maximum mode
Continuous sound pressure level (Lpa)	< 65 dB (A)
Option:	for use as stationary coffee machine or as mobile station on a trolley
Accessories:	Jumbo water preparation filter, coffee grounds separator with attachment, warmer 20 L or 40 L, large or small trolley, control cable for 2nd hot plate, step for filling pots, adapter (for connecting the flexible cord), volume drain 101 mm long or 166 mm long
Miscellaneous:	wet coffee grounds discharge
Empty weight:	ca. 70 kg
Water connection:	1/2" (TW 15)
Flow pressure:	min. 0.2 MPa at 8 L min.
Drain:	DN 40 (1 1/2"), gradient at least 2%
Type:	03 6620 0001 storage urn 20 L, 1 / N / PE, 50Hz, 230V, 0.07 kW, fuse protection building 16 A,
Degree of protection:	IPX0
Protection class:	Protection class I
Perceptible heat emission:	0.07 kWh/h in maximum mode
Miscellaneous	automatic double dispensing, automatic postbrewing, level indicator, undercounter height 76-141 mm, without cup table max. 200 mm
Type:	03 6620 0101 storage urn 20 L, 1 / N / PE, 50Hz, 230V, 0.07 kW, fuse protection building 16 A, level indicator,
Degree of protection:	IPX0
Protection class:	Protection class I
Perceptible heat emission:	0.07 kWh/h in maximum mode
Miscellaneous	pushbutton pot dispensing, automatic postbrewing, level indicator, undercounter height 76-141 mm, without cup table max. 200 mm
Type:	03 6620 0294 storage urn 20 L, with feet, 1 / N / PE, 50Hz, 230V, 0.07 kW, fuse protection building 16 A, level indicator,
Protection class:	IPX0

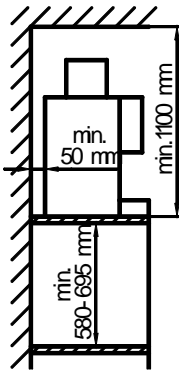
WMF COFFEE MACHINES

Degree of protection:	degree of protection I
Perceptible heat emission:	0.07 kW/h in maximum mode
Miscellaneous	pushbutton pot dispensing, automatic postbrewing, undercounter height 240 mm, level indicator, undercounter height max. 300 mm
Type:	03 6620 1001 storage urn 20 L , 1 / N / PE, 50Hz, 230V, 0.07 kW, fuse protection building 16 A,
Degree of protection:	IPX0
Protection class:	Protection class I
Perceptible heat emission:	0.07 kWh/h in maximum mode
Miscellaneous	automatic double dispensing, automatic postbrewing, level indicator - undercounter height 76-141 mm, without cup table max. 200 mm, with additional tap - undercounter height 185 mm at the back,
Type:	03 6620 2001 storage urn 20 L , 1 / N / PE, 50Hz, 230V, 0.07 kW, fuse protection building 16 A, level indicator,
Degree of protection:	IPX0
Protection class:	Protection class I
Perceptible heat emission:	0.07 kWh/h in maximum mode
Miscellaneous	with tap, undercounter height 185 mm
Type:	03 6640 0001 storage urn 40 L , 1 / N / PE, 50Hz, 230V, 0.07 kW, fuse protection building 16 A, level indicator,
Degree of protection:	IPX0
Protection class:	Protection class I
Perceptible heat emission:	0.07 kWh/h in maximum mode
Miscellaneous	automatic double dispensing, automatic postbrewing, level indicator - undercounter height 76-141 mm, with additional tap - undercounter height 185 mm at the back,
Empty weight:	types 6620 0001, 6620 0101, 6620 0294, 6620 1001 ca. 21 kg, type 6620 2001 ca. 15.5 kg type 6640 1001 ca. 26 kg

Type:	03 9170 0001 Trolley, large
Carrying capacity:	250 kg (suitable for 2 hot plates 20/40 L or 1 P-GV and 1 hot plate 20/40 L)
Miscellaneous:	drip pan and height-adjustable shelf in 6 50 mm steps, 2 castors with lock
Empty weight:	ca. 59 kg
Type:	03 9170 1001 Trolley, small
Carrying capacity:	250 kg (suitable for 1 hot plate 20/40 L or 1 Programat GV)
Miscellaneous:	drip pan and height-adjustable shelf in 6 50 mm steps, 2 castors with lock
Empty weight:	ca. 25 kg

WMF COFFEE MACHINES

Installation clearances:



For the installation a minimum clearance of 50 mm to the back wall and at the sides to walls or other non-WMF equipment is required for functional, service and safety reasons.

A clear height of 1100 mm from the top of the installation area is required. The height of the installation area from the top of the floor should be at least 700 mm and a maximum of 900 mm.

Installation of accessories underneath the unit (such as water filter or sediment separator) requires a clearance of 580 and 695 mm, depending on the configuration and the local installation conditions.

If the connections of the machine are down through the counter, please also consider the space required by the connection lines, which may restrict the usable space in the substructure.

Electrical connection:

The following specifications for the electrical connection and the cited standards are applicable for connecting machines in EU countries. If applicable, additional national regulations must be observed. Outside the EU the acceptance of the cited standards must be checked by the persons who market the machines.

The building electrical system must comply with IEC 364. For increased safety the device should be protected by an earth-leakage circuit breaker with 30 mA rated fault current (EN 61008). A standard single-phase electrical outlet or a standard 5-pin three-phase electrical outlet complying with EN 60309 must be installed near the device or 30 cm below the top of the counter on the back or side of the counter. If the power connection cord of this device has been damaged, it must be replaced by our customer service or by a similarly qualified person. If the machine is permanently connected to the building power supply, a circuit breaker that disconnected all poles (main switch) in accordance with EN 60947 must be installed with at least 3 mm contact separation must be installed to protect the machine; the disconnecting device is recommended for a flexible connection. The power cord must not be in contact with hot objects. The main switch and the electrical outlet are part of the building installation. The machine must not be installed with a fixed building connection when used with a trolley (mobile station).

Water feed and drainage:

A sufficiently large, easily accessible stop cock (preferably a ball valve) and a dirt filter with a 0.080 mm mesh must be installed in the water pipe under the counter.

If a sediment separator is installed, a drainage connection must be available towards the back of the bottom cupboard about 70 mm above the installed floor or socket.

If the drainage connection does not have a sediment separator, the drain must be installed at the rear panel of the bottom cupboard 50 cm from the top of the counter.

A pipe syphon must be installed in the vented drainage pipe. (Fit hose connection in the funnel with a hose ring holder)

The WMF-specific conditions for water, power and effluent must be observed at all times.

For the connection from below through the counter an opening is required in accordance with the drawing (see elevation drawing) or a hole approx. 80 to 120 mm in diameter. Alternatively the connections for electricity, water and drainage can be taken through the body of the machine from the back in the indicated area (see the elevation and side view).

If the water contains more than 160 ppm carbonate, a WMF Jumbo water filter must be installed.

CAUTION: The static water pressure must not exceed 0.6 MPa (6 bar).