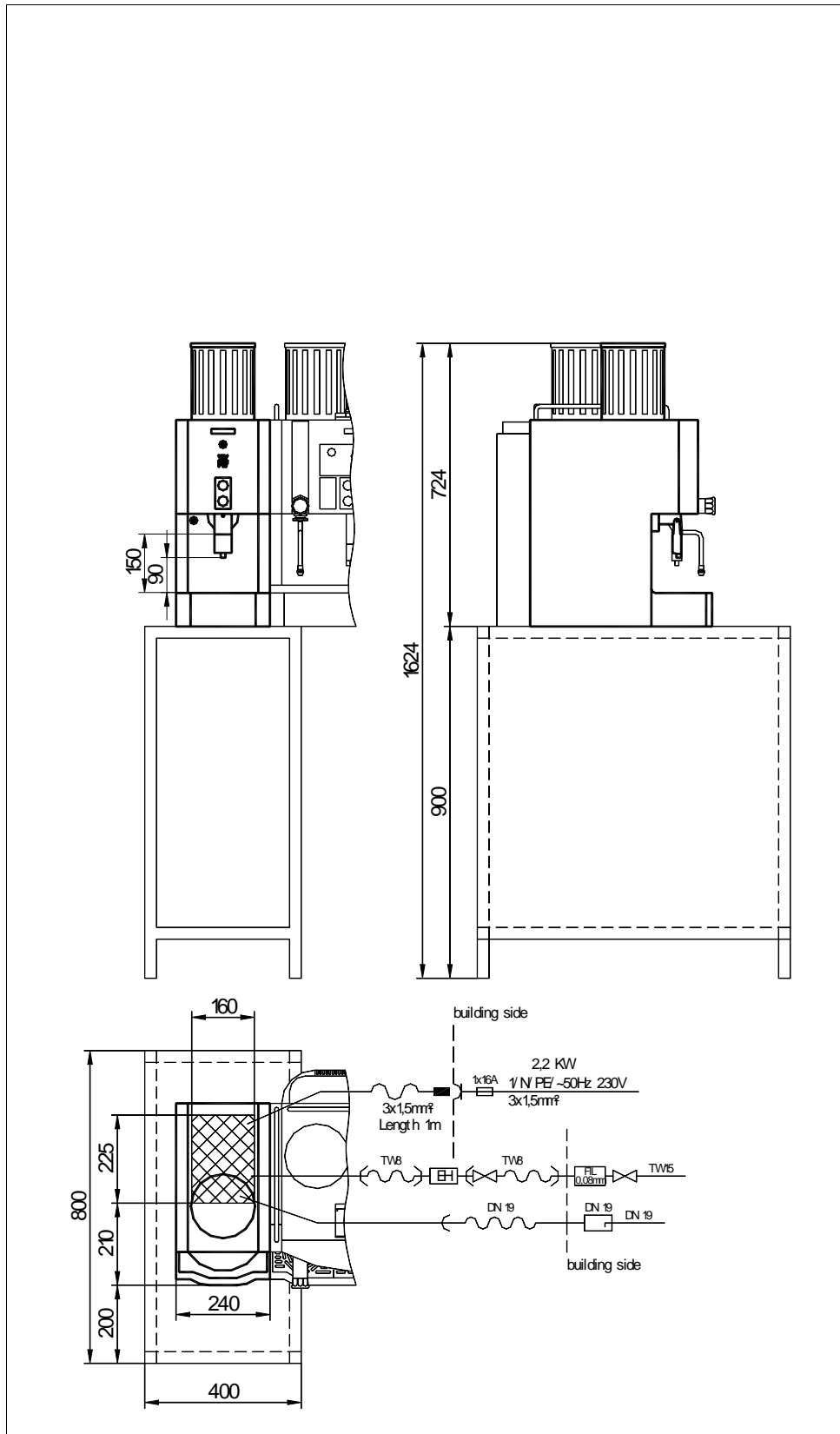


# WMF COFFEE MACHINES

## WMF Planning Info

### Drinking chocolate dispenser Bistro/Cafemat 2 Design

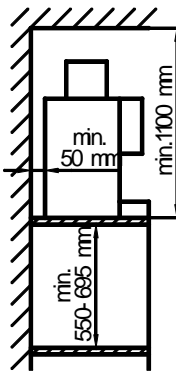


WMF Aktiengesellschaft Vertrieb Kaffeemaschinen  
D-73309 Geislingen/Steige Germany  
Tel. 0 73 31 - 25 71 98  
E-mail: [Gastronomie@wmf.de](mailto:Gastronomie@wmf.de)

Fax 0 73 31/25 72 95  
Internet: <http://www.wmf.de>

# WMF COFFEE MACHINES

## Data sheet for Bistro/Cafemat 2 Design drinking chocolate dispenser

<b>Type:</b> The article numbers in the table represent only a cross-section of the complete range of articles	<b>03 9410 1002</b> 1 / N / 50 Hz, PE, 230V, 2.2 kW, fuse protection building 16 A, Bistro Design, self-service model, lockable, 1 button  <b>03 9420 1002</b> 1 / N / PE, 50Hz, 230V, 2.2 kW, fuse protection building 16 A, Bistro Design, 2 buttons, cup, pot
<b>Output per hour:</b>	140 cups, hot water capacity, ca. 17 L (total),
<b>Capacity:</b>	Chocolate powder container ca. 2 kg
<b>Degree of protection:</b>	IPX0
<b>Protection class:</b>	Protection class I
<b>Perceptible heat emission:</b>	0.11 kWh/h in standby mode
<b>Perceptible heat emission:</b>	2.0 kWh/h in maximum mode
<b>Continuous sound pressure level (Lpa)</b>	< 63 dB (A)
<b>Water connection:</b>	1/2" (TW 15)
<b>Drain:</b>	DN 19, gradient at least 2%
<b>Empty weight:</b>	ca. 22 kg
<b>Installation clearances:</b> 	<p>For the installation a minimum clearance of 50 mm to the back wall and at the sides to walls or other non-WMF equipment is required for functional, service and safety reasons.</p> <p>A clear height of 1100 mm from the top of the installation area is required. The height of the installation area from the top of the floor should be at least 700 mm and a maximum of 900 mm.</p> <p>Installation of accessories underneath the unit (such as water filter or sediment separator) requires a clearance of 550 and 695 mm, depending on the configuration and the local installation conditions.</p> <p>If the connections of the machine are down through the counter, please also consider the space required by the connection lines, which may restrict the usable space in the substructure.</p>

# WMF COFFEE MACHINES

<b>Electrical connection:</b>	<p>The following specifications for the electrical connection and the cited standards are applicable for connecting machines in EU countries. If applicable, additional national regulations must be observed. Outside the EU the acceptance of the cited standards must be checked by the persons who market the machines.</p> <p>The building electrical system must comply with IEC 364. For increased safety the device should be protected by an earth-leakage circuit breaker with 30 mA rated fault current (EN 61008). A standard electrical outlet compliant with EN 60309 must be installed near the device or 30 cm below the top of the counter at the back or side of the undercounter structure for a single-phase connection. If the power connection cord of this device has been damaged, it must be replaced by our customer service or by a similarly qualified person. The power cord must not be in contact with hot objects. The electrical outlet is part of the building installation. The machine must not be installed with a fixed building connection when used with a trolley (mobile station).</p> <p><u>Important information:</u></p> <p>To prevent any interference with our shielded data lines by equipotential currents between the devices, an additional equipotential bonding should be installed for devices connected to an accounting system. (See IEC 364)</p>
<b>Water feed and drainage:</b>	<p>A sufficiently large, easily accessible stop cock (preferably a ball valve) and a dirt filter with a 0.080 mm mesh must be installed in the water pipe under the counter.</p> <p>If the drainage connection does not have a sediment separator, the drain must be installed at the rear panel of the bottom cupboard 50 cm from the top of the counter.</p> <p>A pipe syphon must be installed in the vented drainage pipe. (Fit hose connection in the funnel with a hose ring holder)</p> <p>The WMF-specific conditions for water, power and effluent must be observed at all times.</p> <p>For the connection from below through the counter an opening is required in accordance with the drawing (see elevation drawing) or a hole approx. 80 to 120 mm in diameter. Alternatively the connections for electricity, water and drainage can be taken through the body of the machine from the back in the indicated <input type="checkbox"/> area (see the elevation and side view).</p> <p><b>CAUTION:</b> The static water pressure must not exceed 0.6 MPa (6 bar).</p>