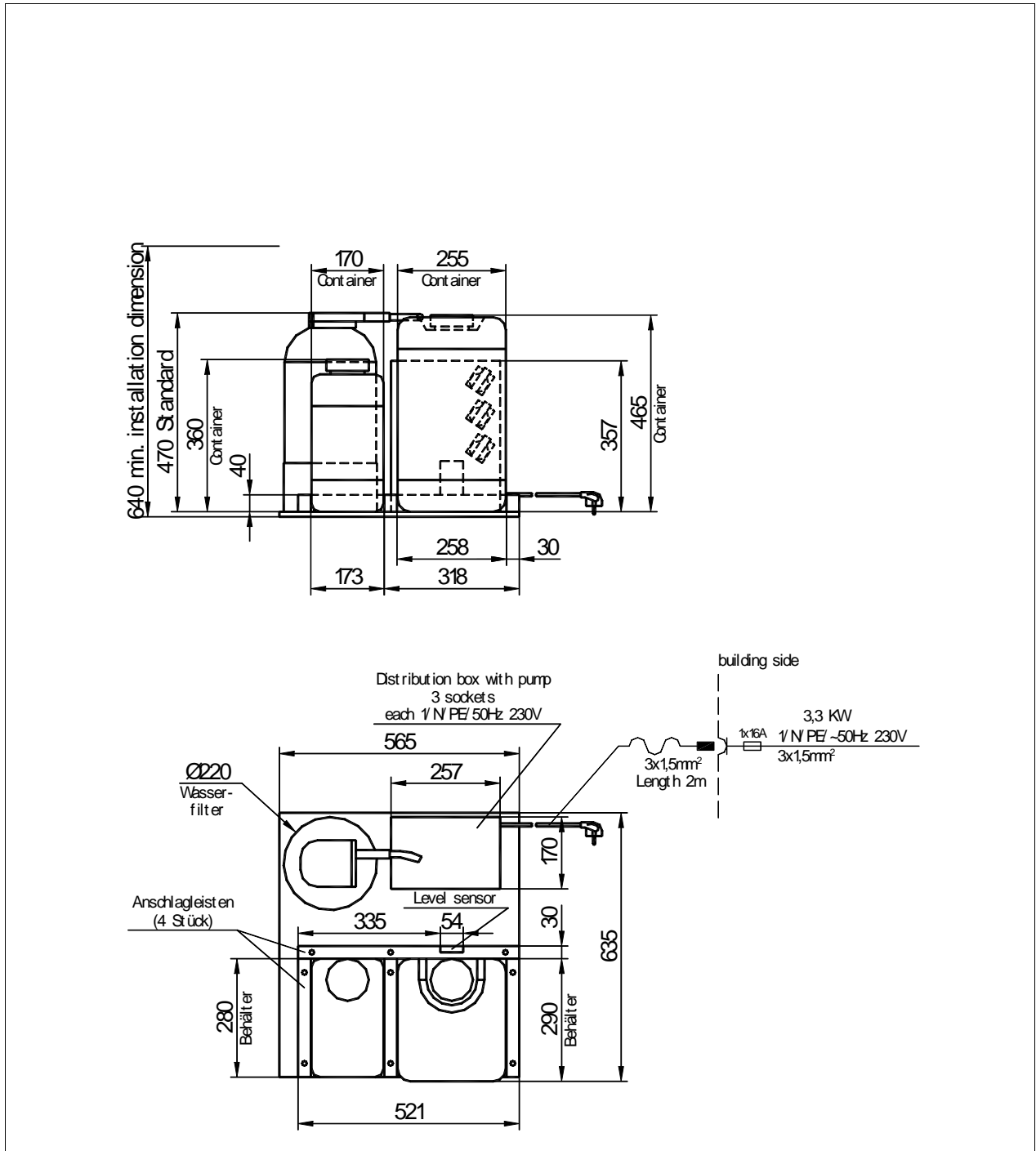


# WMF COFFEE MACHINES

## WMF Planning Info

Insert 03 9490 1000



# WMF COFFEE MACHINES

## Data sheet for insert series 9490

<b>Type:</b>	<b>03 9490 0001 insert</b> – without water filter, 1 / N / PE/ 50 Hz, 230 V, 0.2 kW, fuse protection building 16 A. Separate power and water supply or drainage for all coffee machine locations without a water supply or for installation in counters or for mobile applications.  <b>Suitable for operation of a WMF coffee machine with a power consumption of maximum 3.3 kW or for 3 units each with 230 V mains connection</b>
<b>Degree of protection:</b>	IPX0
<b>Protection class:</b>	Protection class I
<b>Perceptible heat emission:</b>	0.1 kWh/h in standby mode
<b>Perceptible heat emission:</b>	Max. 0.2 kWh/h in maximum mode
<b>Continuous sound pressure level (L<sub>pa</sub>)</b>	< 70 dB (A)
<b>Accessories:</b>	Water tank (plastic) 25 L, W 255 x H 465 x D 290, waste water tank (plastic) 13 L, W 170 x H 360 x D 280, electrical distribution board and pump housing with 3 sockets each 230V/1/N/PE, W 257 x H 357 x D 170, 3 units Stop bars L 280 x H 40 x W 30, 1 unit Stop bar L 521 x H 40 x D 30 (complete), level sensor (for water tank)
<b>Special accessories:</b>	water filter (standard) as stipulated
<b>Installation template</b>	One installation template, <b>dimensions W 565 mm x H 640 mm x D 635 mm</b> , is required for correct installation of components as specified by the drawing
<b>Empty weight:</b>	ca. 25 kg (without water filter)
<b>Electrical connection:</b>	<p>The following specifications for the electrical connection and the cited standards are applicable for connecting machines in EU countries. If applicable, additional national regulations must be observed. Outside the EU the acceptance of the cited standards must be checked by the persons who market the machines.</p> <p>The building electrical system must comply with IEC 364. For increased safety the device should be protected by an earth-leakage circuit breaker with 30 mA rated fault current (EN 61008). A standard electrical outlet compliant with EN 60309 must be installed near the device or 30 cm below the top of the counter at the back or side of the undercounter structure for a single-phase connection. If the power connection cord of this device has been damaged, it must be replaced by our customer service or by a similarly qualified person. The power cord must not be in contact with hot objects. The main switch and the electrical outlet are part of the building installation. The machine must not be installed with a fixed building connection when used with a trolley (mobile station).</p>