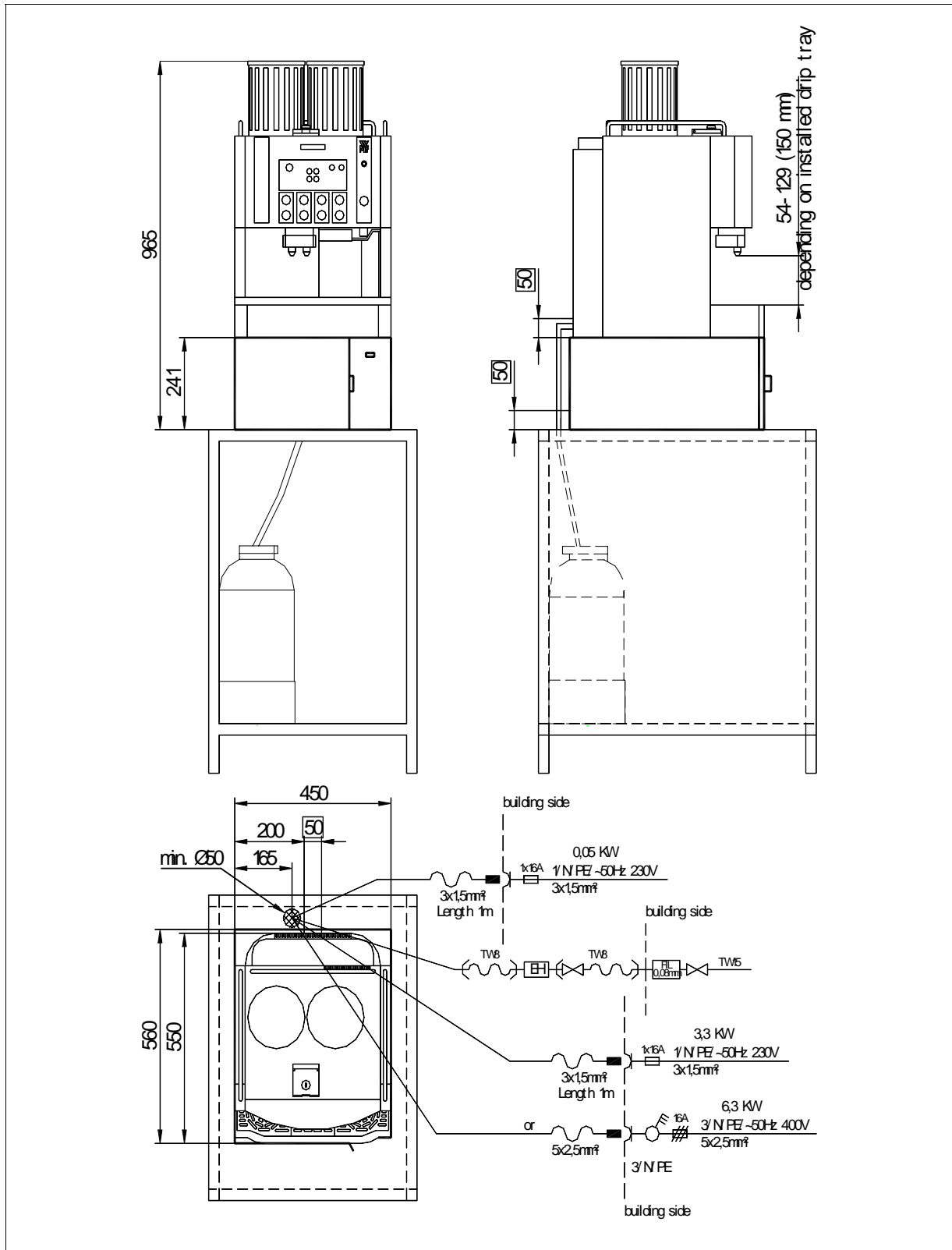


# WMF COFFEE MACHINES

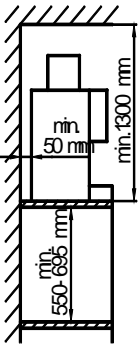
## WMF Planning Info

### Cooler below centre for Bistro and Bistro easy



# WMF COFFEE MACHINES

## Data sheet for cooler below centre for Bistro and Bistro easy series

<b>Type:</b>	03 9467 0001 1 / N / PE, 50Hz, 230V, 0.45 kW, fuse protection building 16 A,
<b>Accessories:</b>	Milk tank ca. 9.5 litres
<b>Special accessories:</b>	03 9802 0000 drip tray complete, with milk hose, for cups and vessels height 45 - 129 mm or
<b>special order required</b>	03 9802 1000 drip tray complete, with lowered drip pan, with milk hose, for cups and vessels height 45 - 150 mm
<b>Degree of protection:</b>	IPX0
<b>Protection class:</b>	Protection class I
<b>Perceptible heat emission:</b>	0.04 kWh/h in maximum mode
<b>Continuous sound pressure level (L<sub>pa</sub>)</b>	< 43 dB (A)
<b>Miscellaneous:</b>	When installing an cooler below centre <b>the coffee machine is only available with integrated sediment drawer. In this case the counter sediment discharge option in a building-side trap under the counter is not available.</b>
<b>Drain:</b>	DN 19, gradient at least 2%
<b>Empty weight:</b>	ca. 20 kg
<b>Installation clearances:</b>	<p>For the installation a minimum clearance of 50 mm to the back wall and at the sides to walls or other non-WMF equipment is required for functional, service and safety reasons.</p> <p>A clear height of 1300 mm from the top of the installation area is required. The height of the installation area from the top of the floor should be at least 700 mm and a maximum of 900 mm.</p> <p>Installation of accessories underneath the unit (such as water filter) requires a clearance of 550 and 695 mm, depending on the configuration and the local installation conditions.</p> <p>If the connections of the machine are down through the counter, please also consider the space required by the connection lines, which may restrict the usable space in the substructure.</p> 
<b>Electrical connection:</b>	<p>The following specifications for the electrical connection and the cited standards are applicable for connecting machines in EU countries. If applicable, additional national regulations must be observed. Outside the EU the acceptance of the cited standards must be checked by the persons who market the machines.</p> <p>The building electrical system must comply with IEC 364. For increased safety the device should be protected by an earth-leakage circuit breaker with 30 mA rated fault current (EN 61008). A standard single-phase electrical outlet or a standard 5-pin three-phase electrical outlet complying with EN 60309 must be installed near the device or 30 cm below the top of the counter on the back or side of the counter. If the power connection cord of this device has been damaged, it must be replaced by our customer service or by a similarly qualified person. If the machine is permanently connected to the building power supply, a circuit breaker that disconnected all poles (main switch) in accordance with EN 60947 must be installed with at least 3 mm contact separation must be installed to protect the machine; the disconnecting device is recommended for a flexible connection. The power cord must not be in contact with hot objects. The main switch and the electrical outlet are part of the building installation.</p>